

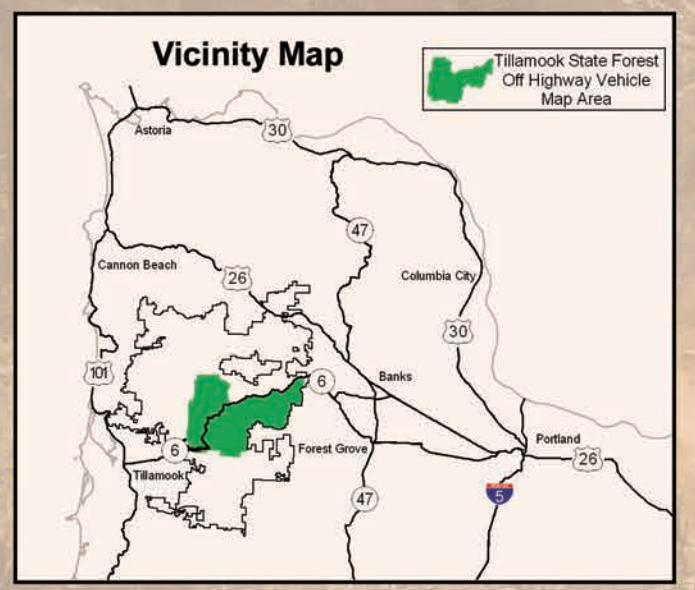
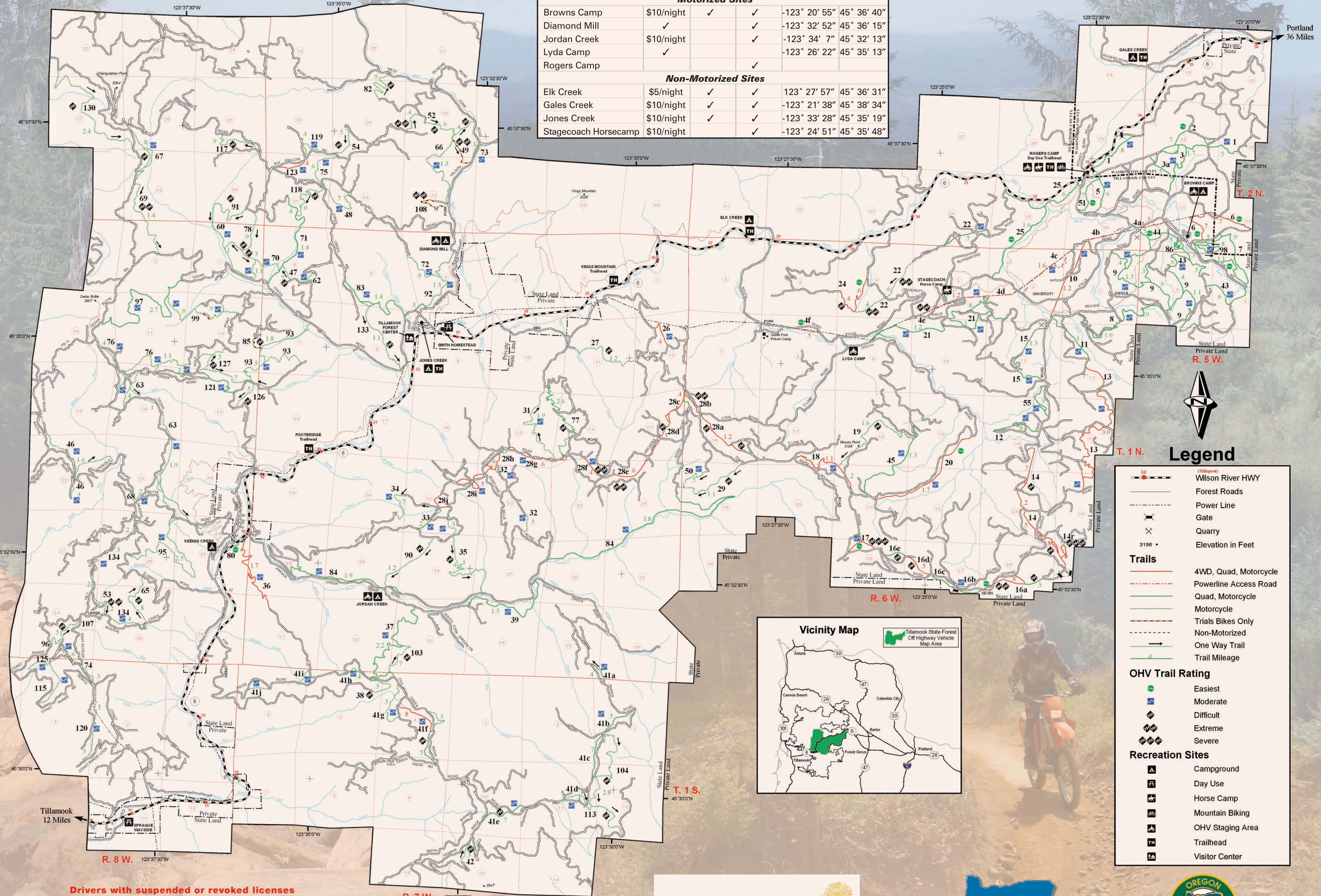
# Tillamook State Forest Off-Highway Vehicle Trail Guide

## Motorcycle, Quad, and 4WD Trails

I.D. #	Name	Difficulty
1	Rogers Camp Road	●
2	Firebreak One	●
3	Crooked Bridge	●
3a	Marks	●
4	Powerline	●
4e	Little Rubicon	●
5	Blockbuster	●
6	Browns Powerline	●
7	Clydes	●
8	Julies	●
9	Sidewinder	●
10	University Firepower	●
11	Elmers	●
12	Gummy Worm	●
13	Cedar Tree	●
14	Firebreak Five	●
14r	Crushers	●
15	Island	●
16a	Saddle Up	●
16b	Dog Leg	●
16c	Waldos Way	●
16d	Airplane Hill	●
16e	Cedar Way	●
17	7-Up	●
18	Hogs Back	●
19	Tomans Knob	●
20	Hoodraiser	●
21	Chute	●
22	Back to Back	●
22	Back to Back	●
24	Bates Road	●
25	Elliott Creek	●
26	Ample and Alluring	●
27	Ben Smith Loop	●
28	Archers Firebreak	●
28a	Rocky Uphill	●
28b	Can Opener	●
28e	Waterfall	●
28f	Rock Garden	●
29	Morrels Maze	●
31	Benny Hill	●
32	Endless Bummer	●
33	Chainbreaker	●
34	Buckup	●
35	Buzzards Point	●
36	Rogers Road	●
37	Stick in the Nose	●
38	Maddogs Pumpkin Patch	●
39	Spaur Creek	●
41	Firefox	●
41f	Firefox	●
42	Hembre Lookout	●
43	Military	●
44	Quarry	●
45	Log Jam	●
46	Reids Ridge	●
47	Deer Quarry	●
48	Arrowhead	●
49	Fern Gully Trials Bike Only	●
50	Bat Bridge	●
51	K Thumb	●
52	Beaverside	●
53	BFR	●
54	Black Diamond	●
55	Black Water 50	●
60	Bungee Road	●
62	Cedar Jones	●
63	Cedar Ridge	●
65	Coast Range	●
66	Cobmaster	●
67	Cramlets Cliff	●
68	Cut Off	●
69	DC	●
70	Cedar Fence	●
71	Deerfence	●
72	Odins Ridge	●
73	West Fork Bypass	●
74	East Tower	●
75	Elk Wallow	●
76	Frankenstein	●
77	Payne	●
78	Ginger	●
80	Highway Access	●
82	MC	●
83	Jones Creek Road	●
84	Jordan Creek	●
85	Keep Left Trials Bike Only	●
86	Kids Loop	●
90	Marvelous Mainline	●
91	Maryanne	●
92	Mikes	●
93	Mongos Canyon	●
95	Muesial Creek	●
96	North Tower	●
97	Old Cedar Creek	●
98	Oneway	●
99	Outback	●
103	Purple Bug Stump	●
104	Radio Silence	●
107	Relay Ridge	●
108	Rickety Bridge Trials Bike Only	●
113	Schwarz's	●
115	South Tower	●
117	Sticks and Stones	●
118	Stumpy	●
119	Summit	●
120	The Continental	●
121	Thin Wolf	●
123	Truck Dent	●
125	West Tower	●
126	Wolf Foot	●
127	Wolf Point	●
130	Barney Rubble	●
133	Powerline 2	●
134	Muesial Ridge	●

### Campgrounds and Staging Areas

Site Name	Overnight Camping	Drinking Water	Rest Rooms	GPS Coordinates	
				x	y
<b>Motorized Sites</b>					
Browns Camp	\$10/night	✓	✓	-123° 20' 55"	45° 36' 40"
Diamond Mill	✓	✓	✓	-123° 32' 52"	45° 36' 15"
Jordan Creek	\$10/night	✓	✓	-123° 34' 7"	45° 32' 13"
Lyda Camp	✓	✓	✓	-123° 26' 22"	45° 35' 13"
Rogers Camp			✓		
<b>Non-Motorized Sites</b>					
Elk Creek	\$5/night	✓	✓	123° 27' 57"	45° 36' 31"
Gales Creek	\$10/night	✓	✓	-123° 21' 38"	45° 38' 34"
Jones Creek	\$10/night	✓	✓	-123° 33' 28"	45° 35' 19"
Stagecoach Horsecamp	\$10/night	✓	✓	-123° 24' 51"	45° 35' 48"



### Legend

- Wilson River HWY
- Forest Roads
- Power Line
- Gate
- Quarry
- Elevation in Feet

### Trails

- 4WD, Quad, Motorcycle
- Powerline Access Road
- Quad, Motorcycle
- Motorcycle
- Trials Bikes Only
- Non-Motorized
- One Way Trail
- Trail Mileage

### OHV Trail Rating

- Easiest
- Moderate
- Difficult
- Extreme
- Severe

### Recreation Sites

- Campground
- Day Use
- Horse Camp
- Mountain Biking
- OHV Staging Area
- Trailhead
- Visitor Center

Drivers with suspended or revoked licenses are not eligible to operate Off-Highway Vehicles.

