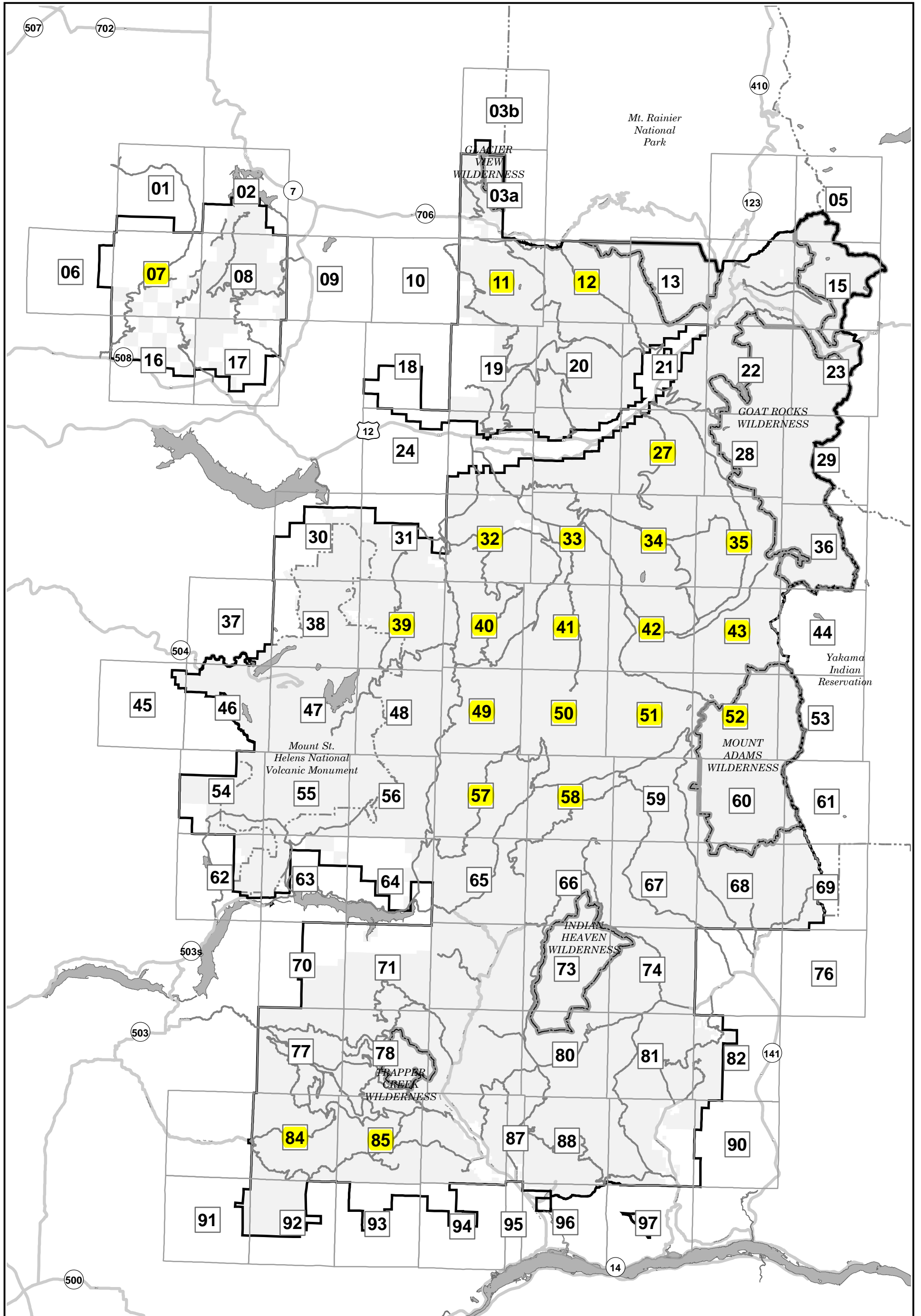




Index Map

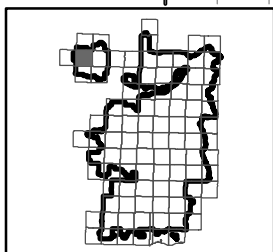
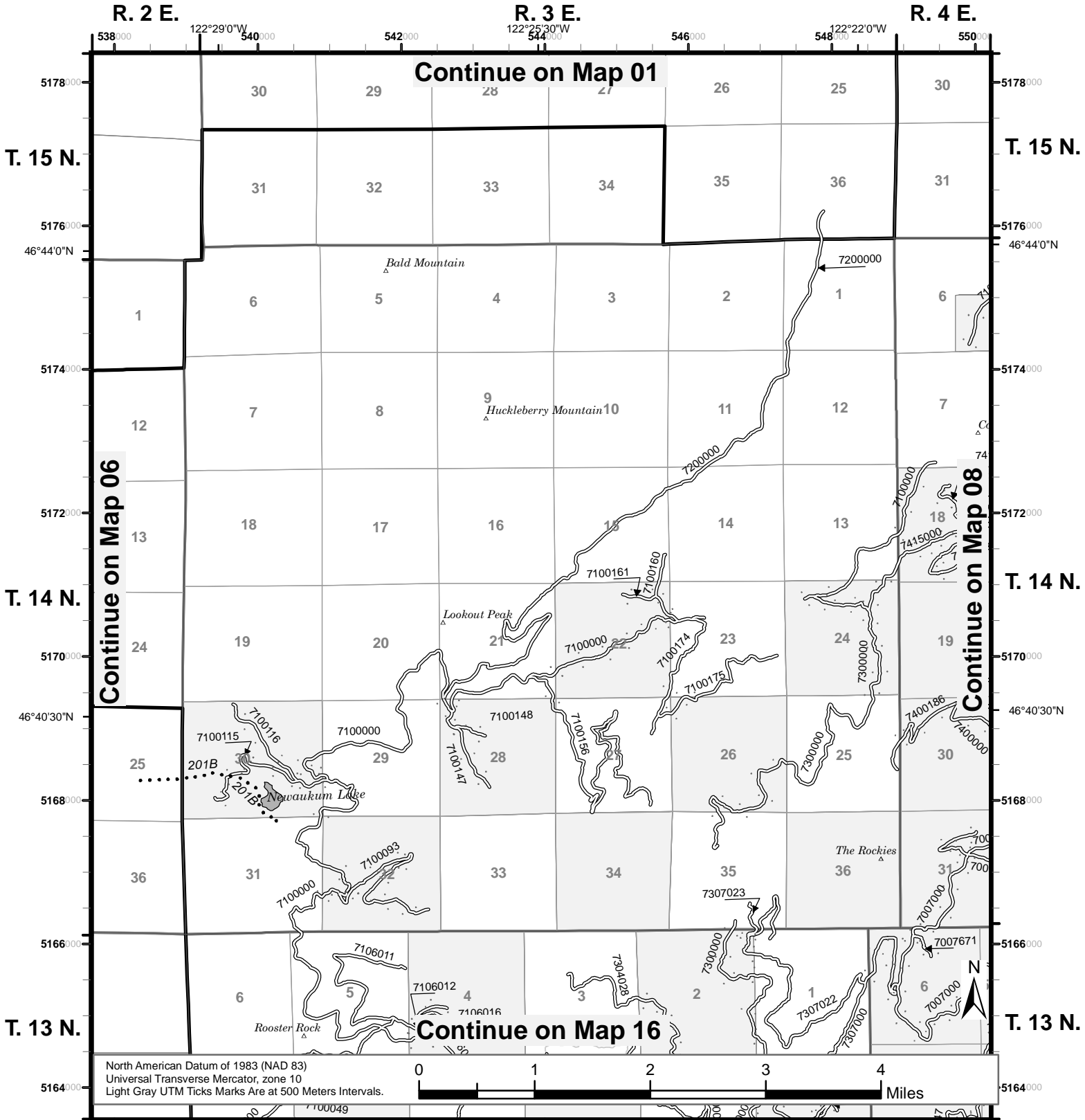


# Map 07



## Motor Vehicle Use Map 2015

## Gifford Pinchot National Forest



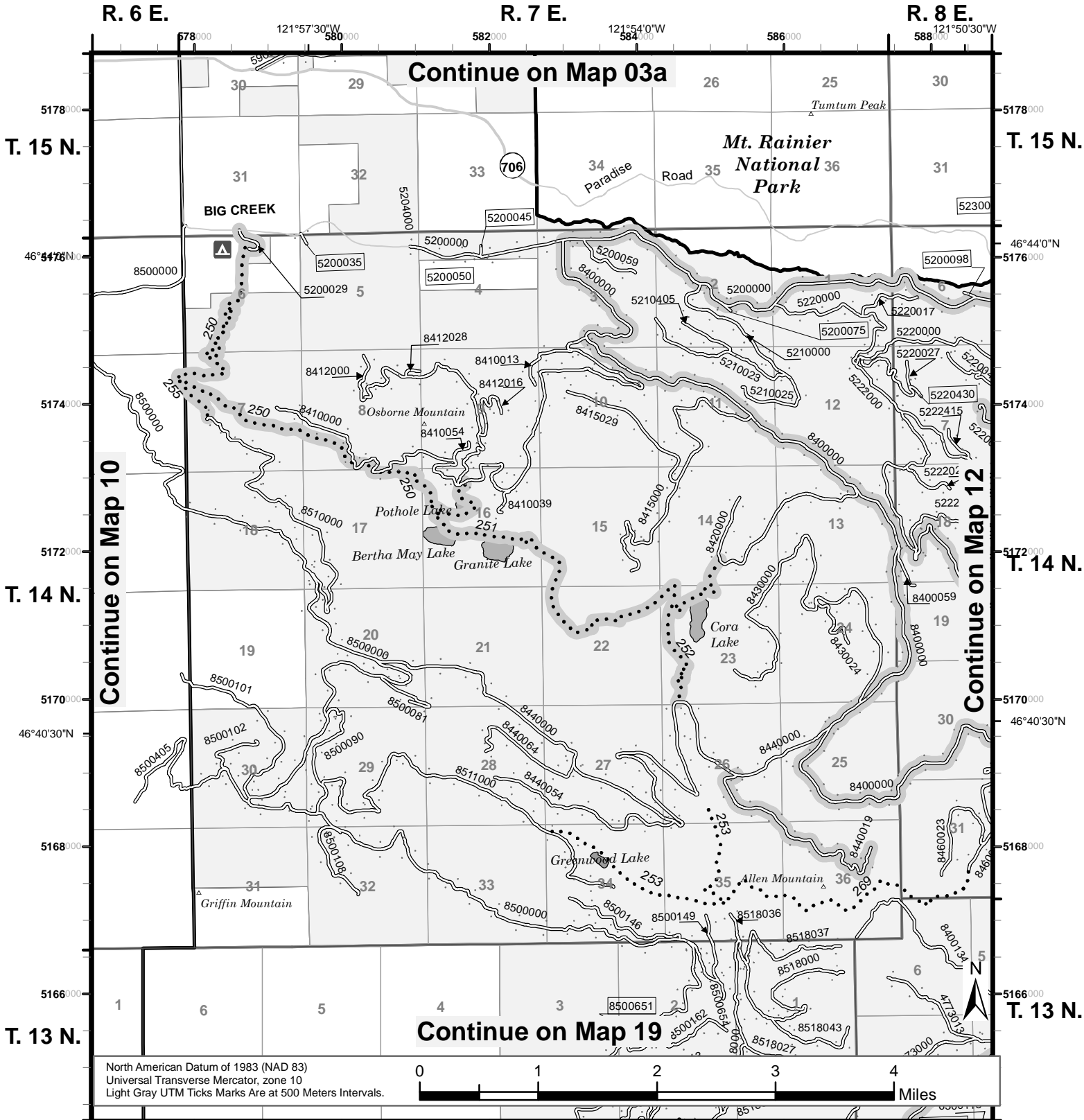
Roads Open to Highway Legal Vehicles Only	Dispersed Camping (See Dispersed Camping Table)	Forest or Unit Boundary	Visitor Information Service
Roads Open to All Vehicles	U.S. and State Highway	National Forest System Land	Recreation Site - Campground
Trails Open to Motorcycles Only	Other Public Roads	Non-National Forest System Lands within this National Forest	Motorized Trail Access
Trails Open to Wheeled Vehicles 50" or Less	Short Route Identifier	Wilderness	Viewpoint
Seasonal Designation (See Table) (Used along with road or trail identified above)		Political Boundary	Picnic Area
		Lakes and Rivers	Peaks
		Township and Range Lines	Milepost Marker
		Section Lines	

# Map 11

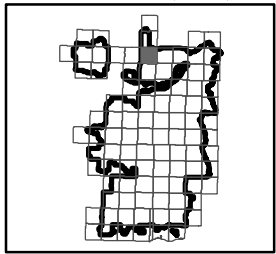


## Motor Vehicle Use Map 2015

## Gifford Pinchot National Forest



North American Datum of 1983 (NAD 83)  
 Universal Transverse Mercator, zone 10  
 Light Gray UTM Ticks Marks Are at 500 Meters Intervals.



Roads Open to Highway Legal Vehicles Only	Dispersed Camping (See Dispersed Camping Table)	Forest or Unit Boundary	Visitor Information Service
Roads Open to All Vehicles	U.S. and State Highway	National Forest System Land	Recreation Site - Campground
Trails Open to Motorcycles Only	Other Public Roads	Non-National Forest System Lands within this National Forest	Motorized Trail Access
Trails Open to Wheeled Vehicles 50' or Less	Short Route Identifier	Wilderness	Viewpoint
Seasonal Designation (See Table) (Used along with road or trail identified above)		Political Boundary	Picnic Area
		Lakes and Rivers	Peaks
		Township and Range Lines	Milepost Marker
		Section Lines	

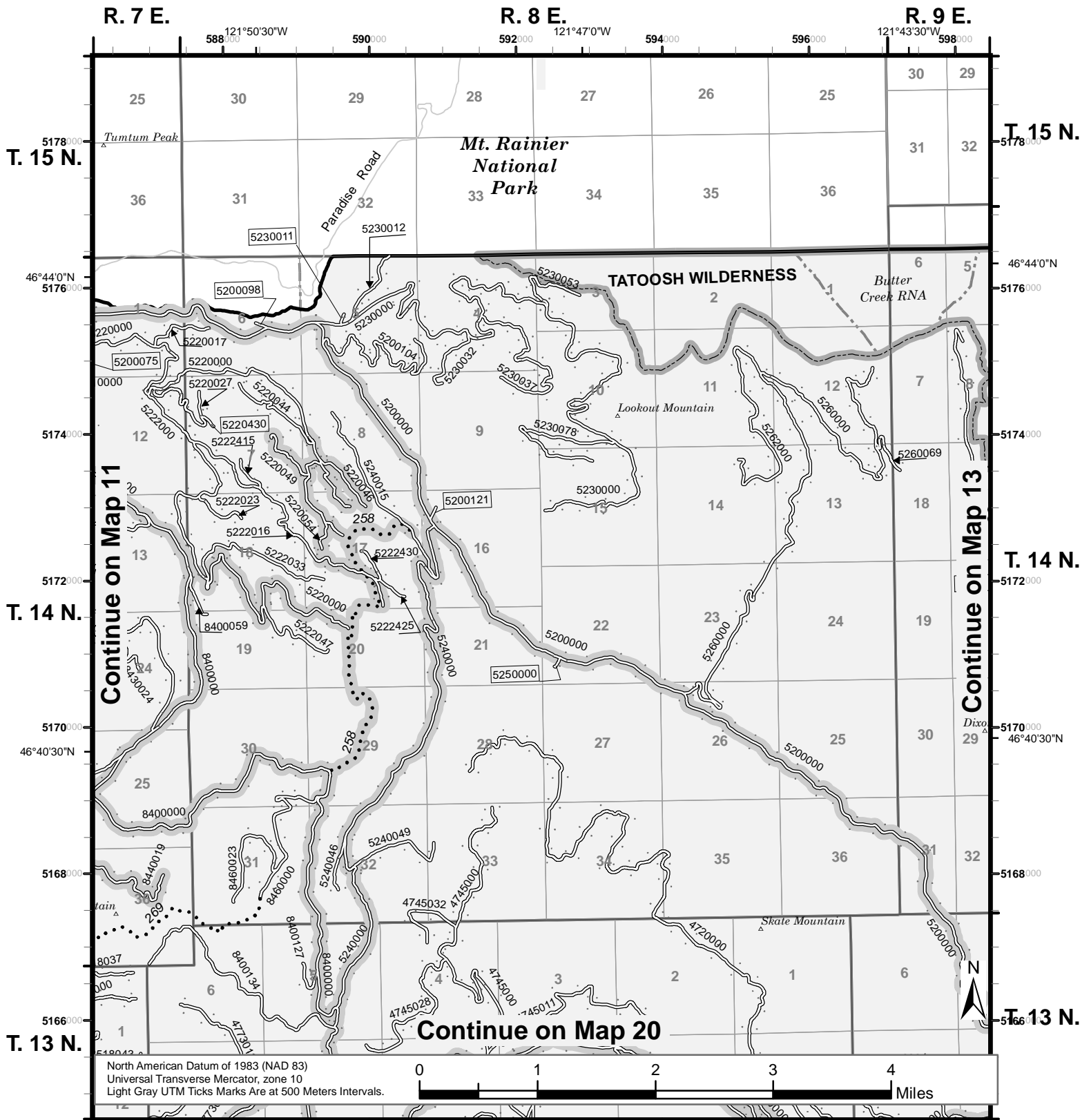
**LEGEND**  
 FS-873-0603

# Map 12

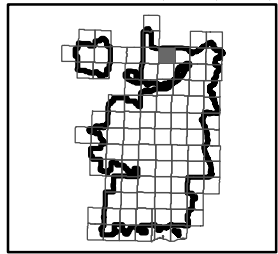
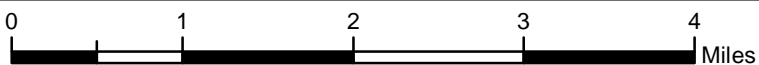


## Motor Vehicle Use Map 2015

## Gifford Pinchot National Forest



North American Datum of 1983 (NAD 83)  
 Universal Transverse Mercator, zone 10  
 Light Gray UTM Ticks Marks Are at 500 Meters Intervals.



Roads Open to Highway Legal Vehicles Only	Dispersed Camping (See Dispersed Camping Table)	Forest or Unit Boundary	Visitor Information Service
Roads Open to All Vehicles	U.S. and State Highway	National Forest System Land	Recreation Site - Campground
Trails Open to Motorcycles Only	Other Public Roads	Non-National Forest System Lands within this National Forest	Motorized Trail Access
Trails Open to Wheeled Vehicles 50' or Less	Short Route Identifier	Wilderness	Viewpoint
Seasonal Designation (See Table) (Used along with road or trail identified above)		Political Boundary	Picnic Area
		Lakes and Rivers	Peaks
		Township and Range Lines	Milepost Marker
		Section Lines	

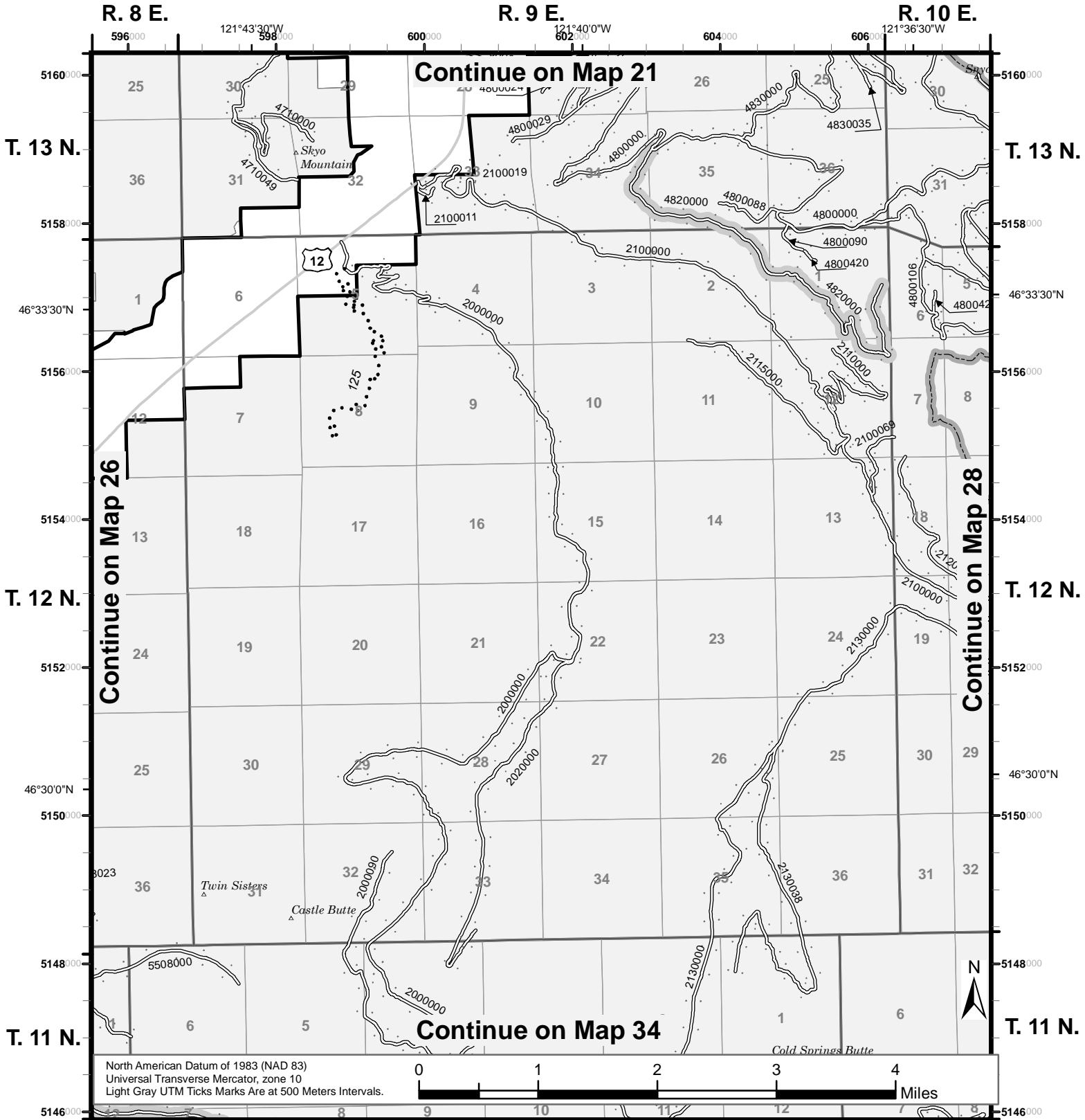
**LEGEND**  
 FS-873-0603

# Map 27

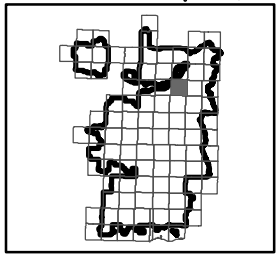
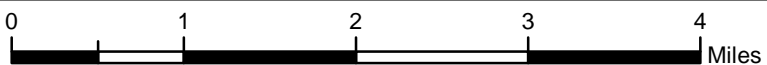


## Motor Vehicle Use Map 2015

## Gifford Pinchot National Forest



North American Datum of 1983 (NAD 83)  
 Universal Transverse Mercator, zone 10  
 Light Gray UTM Ticks Marks Are at 500 Meters Intervals.



Roads Open to Highway Legal Vehicles Only	Dispersed Camping (See Dispersed Camping Table)	Forest or Unit Boundary	Visitor Information Service
Roads Open to All Vehicles	U.S. and State Highway	National Forest System Land	Recreation Site - Campground
Trails Open to Motorcycles Only	Other Public Roads	Non-National Forest System Lands within this National Forest	Motorized Trail Access
Trails Open to Wheeled Vehicles 50' or Less	Short Route Identifier	Wilderness	Viewpoint
Seasonal Designation (See Table) (Used along with road or trail identified above)		Political Boundary	Picnic Area
		Lakes and Rivers	Peaks
		Township and Range Lines	Milepost Marker
		Section Lines	

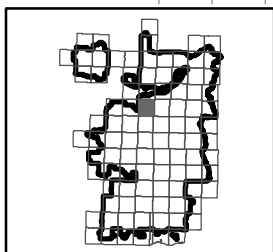
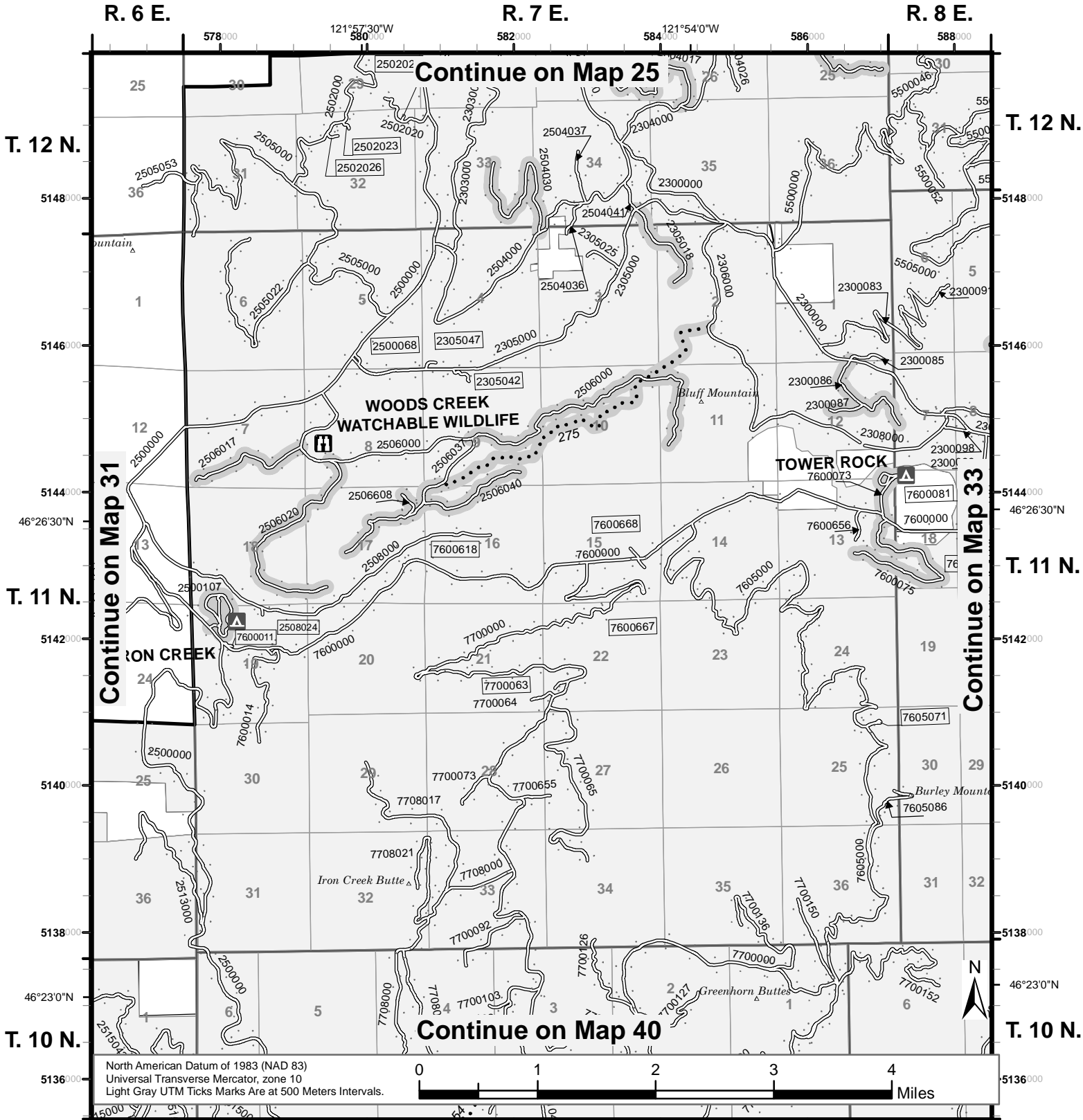
**LEGEND**  
 FS-873-0603

# Map 32



## Motor Vehicle Use Map 2015

## Gifford Pinchot National Forest



Roads Open to Highway Legal Vehicles Only	Dispersed Camping (See Dispersed Camping Table)	Forest or Unit Boundary	Visitor Information Service
Roads Open to All Vehicles	U.S. and State Highway	National Forest System Land	Recreation Site - Campground
Trails Open to Motorcycles Only	Other Public Roads	Non-National Forest System Lands within this National Forest	Motorized Trail Access
Trails Open to Wheeled Vehicles 50' or Less	Short Route Identifier	Wilderness	Viewpoint
Seasonal Designation (See Table) (Used along with road or trail identified above)		Political Boundary	Picnic Area
		Lakes and Rivers	Peaks
		Township and Range Lines	Milepost Marker
		Section Lines	

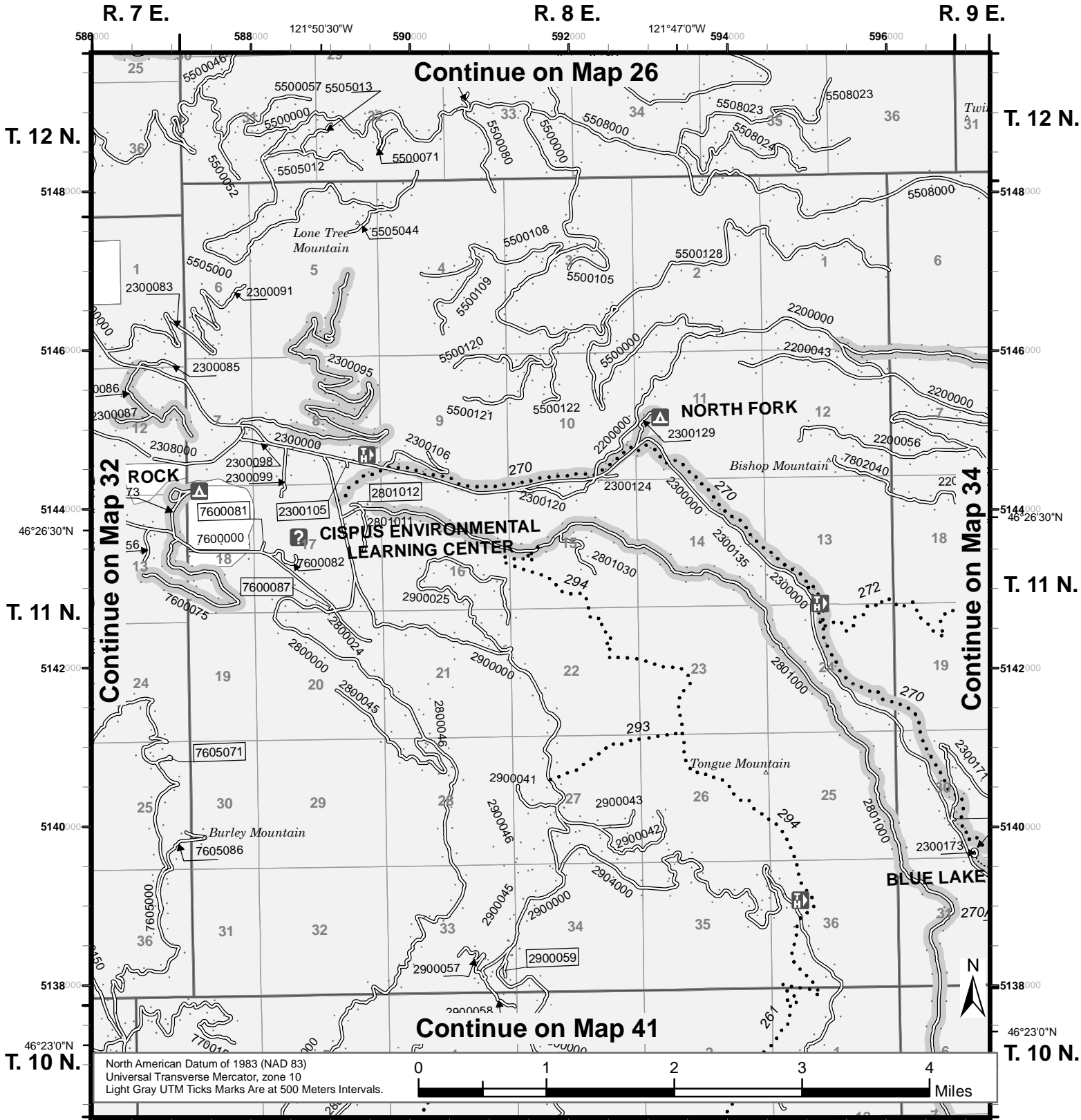
**LEGEND**  
 FS-873-0603

# Map 33

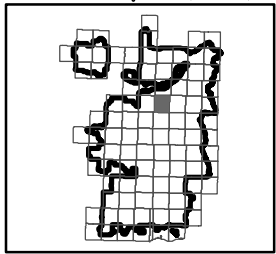
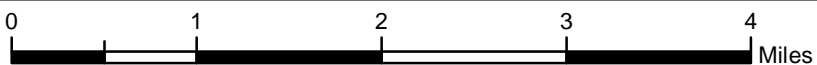


## Motor Vehicle Use Map 2015

## Gifford Pinchot National Forest



North American Datum of 1983 (NAD 83)  
 Universal Transverse Mercator, zone 10  
 Light Gray UTM Ticks Marks Are at 500 Meters Intervals.



Roads Open to Highway Legal Vehicles Only	Dispersed Camping (See Dispersed Camping Table)	Forest or Unit Boundary	Visitor Information Service
Roads Open to All Vehicles	U.S. and State Highway	National Forest System Land	Recreation Site - Campground
Trails Open to Motorcycles Only	Other Public Roads	Non-National Forest System Lands within this National Forest	Motorized Trail Access
Trails Open to Wheeled Vehicles 50' or Less	Short Route Identifier	Wilderness	Viewpoint
Seasonal Designation (See Table) (Used along with road or trail identified above)		Political Boundary	Picnic Area
		Lakes and Rivers	Peaks
		Township and Range Lines	Milepost Marker
		Section Lines	

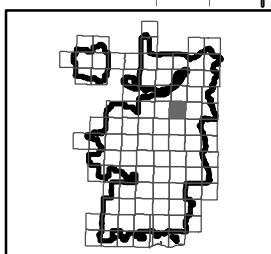
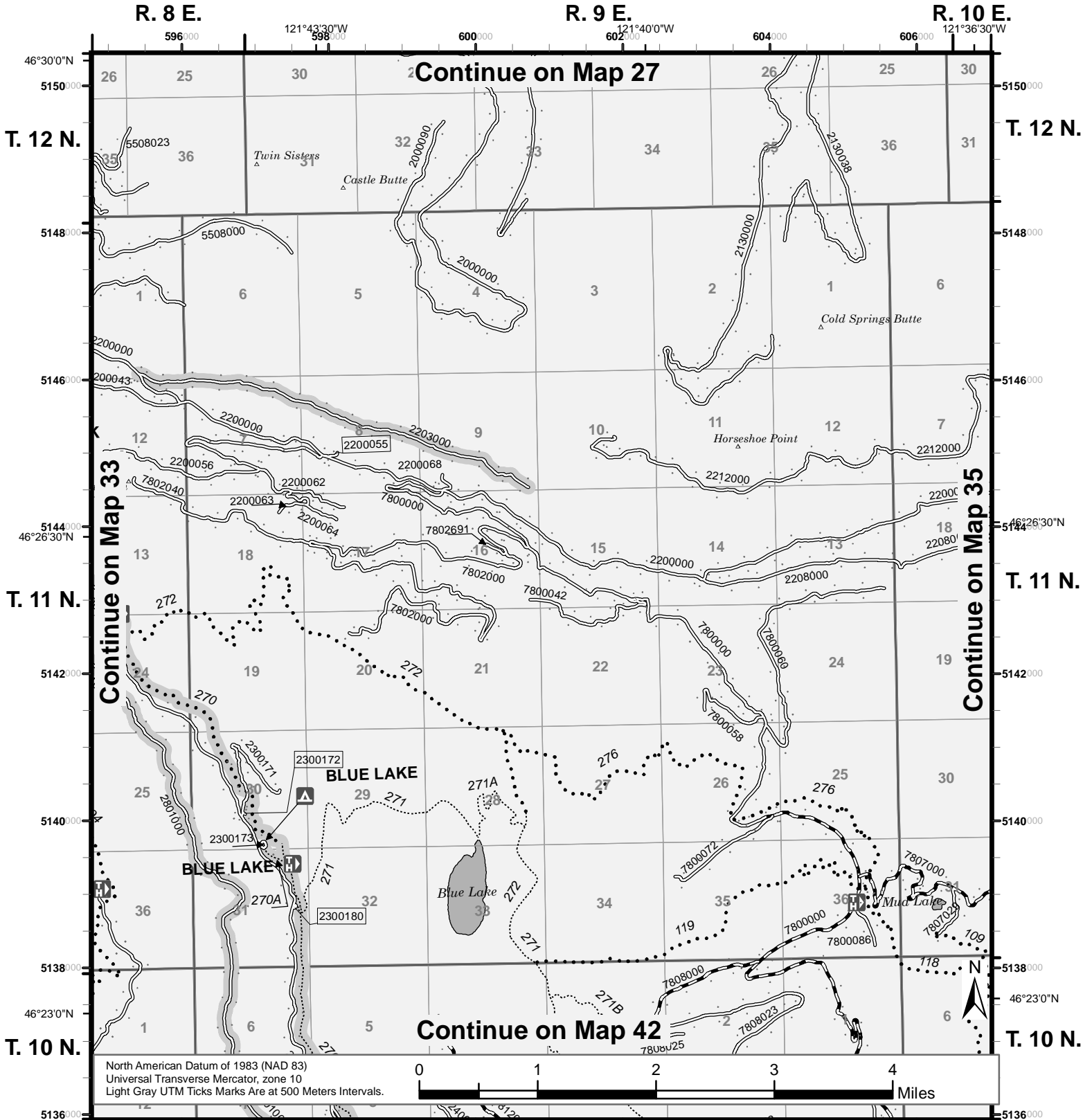
**LEGEND**  
 FS-873-0603

# Map 34



## Motor Vehicle Use Map 2015

## Gifford Pinchot National Forest



Roads Open to Highway Legal Vehicles Only	Dispersed Camping (See Dispersed Camping Table)	Forest or Unit Boundary	Visitor Information Service
Roads Open to All Vehicles	U.S. and State Highway	National Forest System Land	Recreation Site - Campground
Trails Open to Motorcycles Only	Other Public Roads	Non-National Forest System Lands within this National Forest	Motorized Trail Access
Trails Open to Wheeled Vehicles 50' or Less	Short Route Identifier	Wilderness	Viewpoint
Seasonal Designation (See Table) (Used along with road or trail identified above)		Political Boundary	Picnic Area
		Lakes and Rivers	Peaks
		Township and Range Lines	Milepost Marker
		Section Lines	

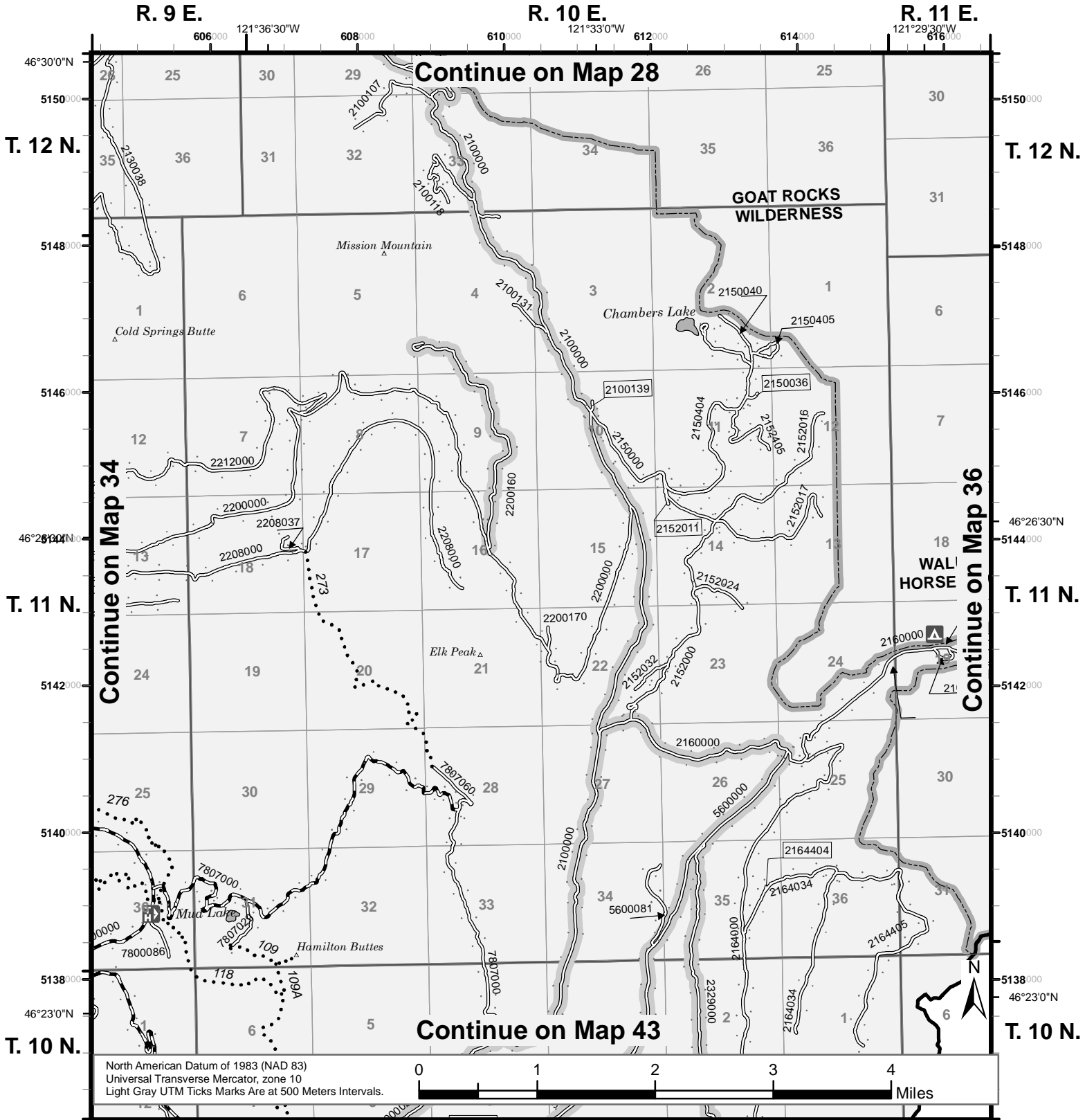


# Map 35

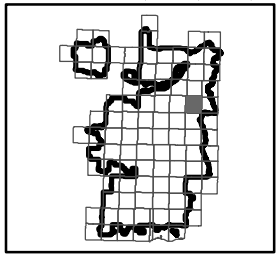
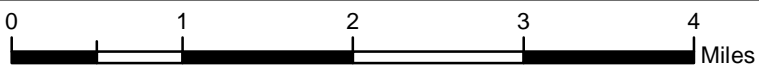


## Motor Vehicle Use Map 2015

## Gifford Pinchot National Forest



North American Datum of 1983 (NAD 83)  
 Universal Transverse Mercator, zone 10  
 Light Gray UTM Ticks Marks Are at 500 Meters Intervals.



Roads Open to Highway Legal Vehicles Only	Dispersed Camping (See Dispersed Camping Table)	Forest or Unit Boundary	Visitor Information Service
Roads Open to All Vehicles	U.S. and State Highway	National Forest System Land	Recreation Site - Campground
Trails Open to Motorcycles Only	Other Public Roads	Non-National Forest System Lands within this National Forest	Motorized Trail Access
Trails Open to Wheeled Vehicles 50' or Less	Short Route Identifier	Wilderness	Viewpoint
Seasonal Designation (See Table) (Used along with road or trail identified above)		Political Boundary	Picnic Area
		Lakes and Rivers	Peaks
		Township and Range Lines	Milepost Marker
		Section Lines	

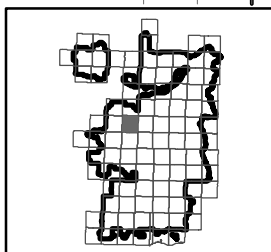
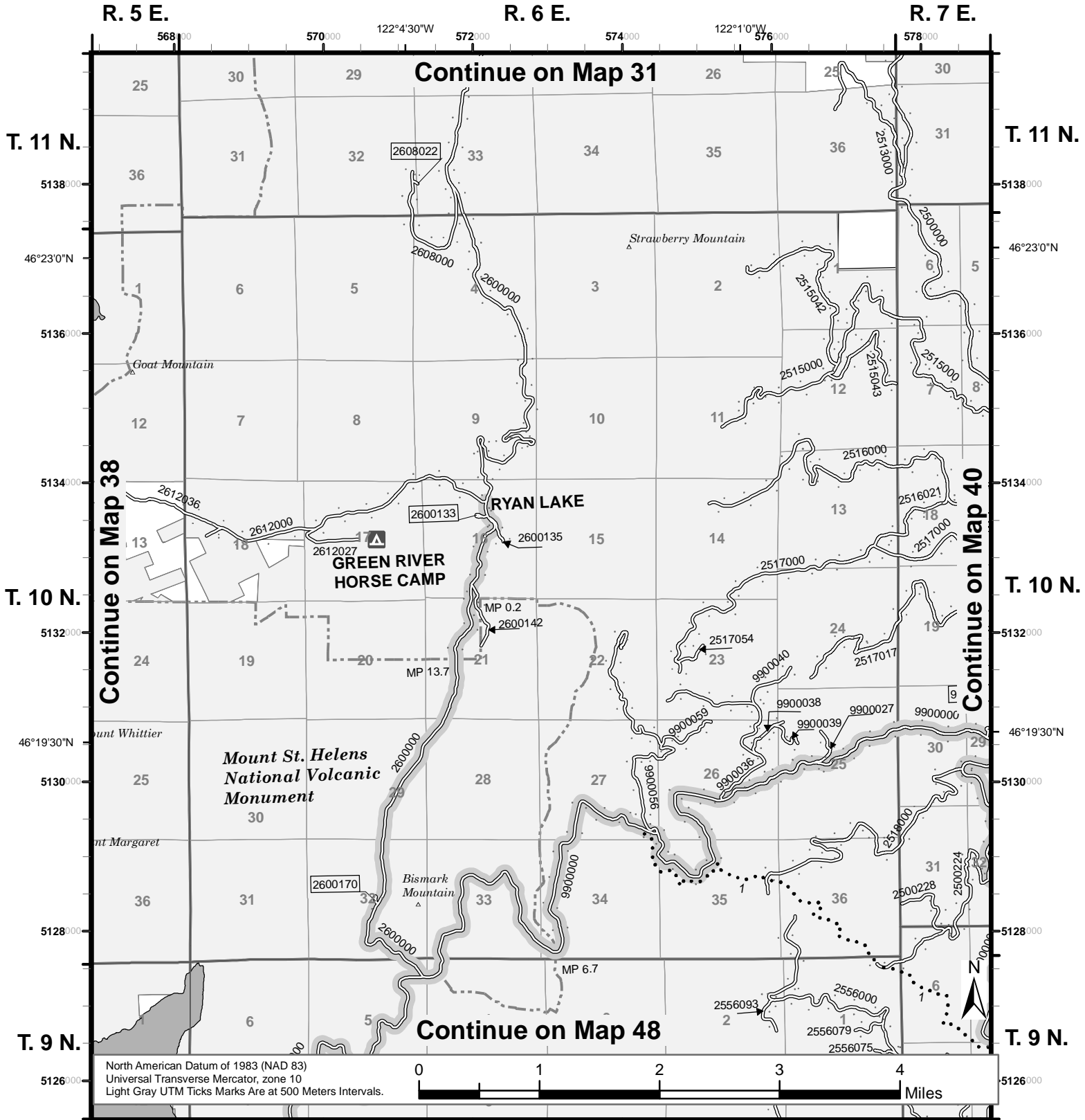
**LEGEND**  
 FS-873-0603

# Map 39



## Motor Vehicle Use Map 2015

## Gifford Pinchot National Forest



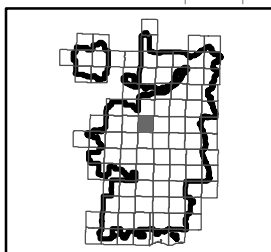
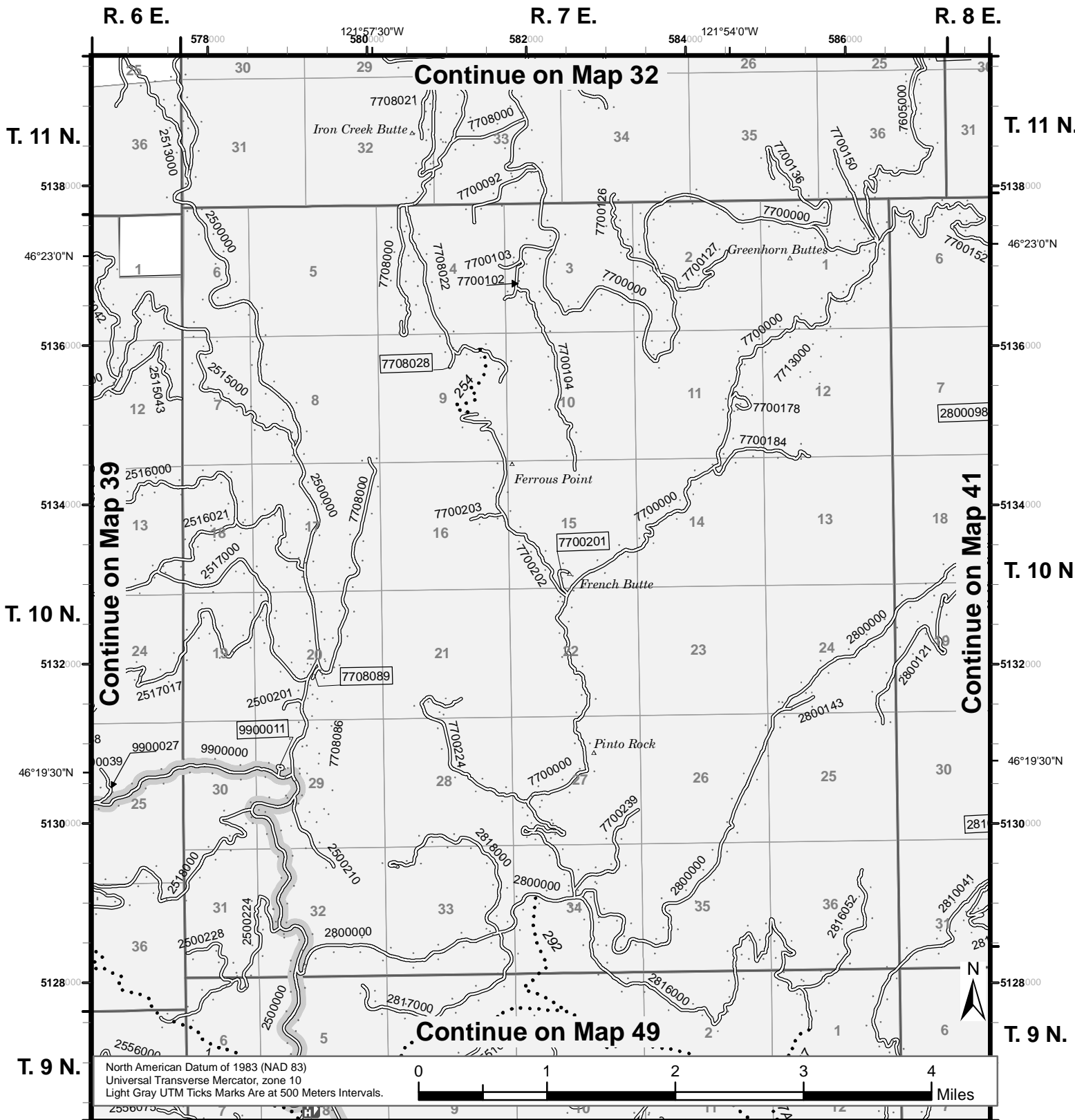
Roads Open to Highway Legal Vehicles Only	Dispersed Camping (See Dispersed Camping Table)	Forest or Unit Boundary	Visitor Information Service
Roads Open to All Vehicles	U.S. and State Highway	National Forest System Land	Recreation Site - Campground
Trails Open to Motorcycles Only	Other Public Roads	Non-National Forest System Lands within this National Forest	Motorized Trail Access
Trails Open to Wheeled Vehicles 50' or Less	Short Route Identifier	Wilderness	Viewpoint
Seasonal Designation (See Table) (Used along with road or trail identified above)		Political Boundary	Picnic Area
		Lakes and Rivers	Peaks
		Township and Range Lines	Milepost Marker
		Section Lines	

# Map 40



## Motor Vehicle Use Map 2015

## Gifford Pinchot National Forest



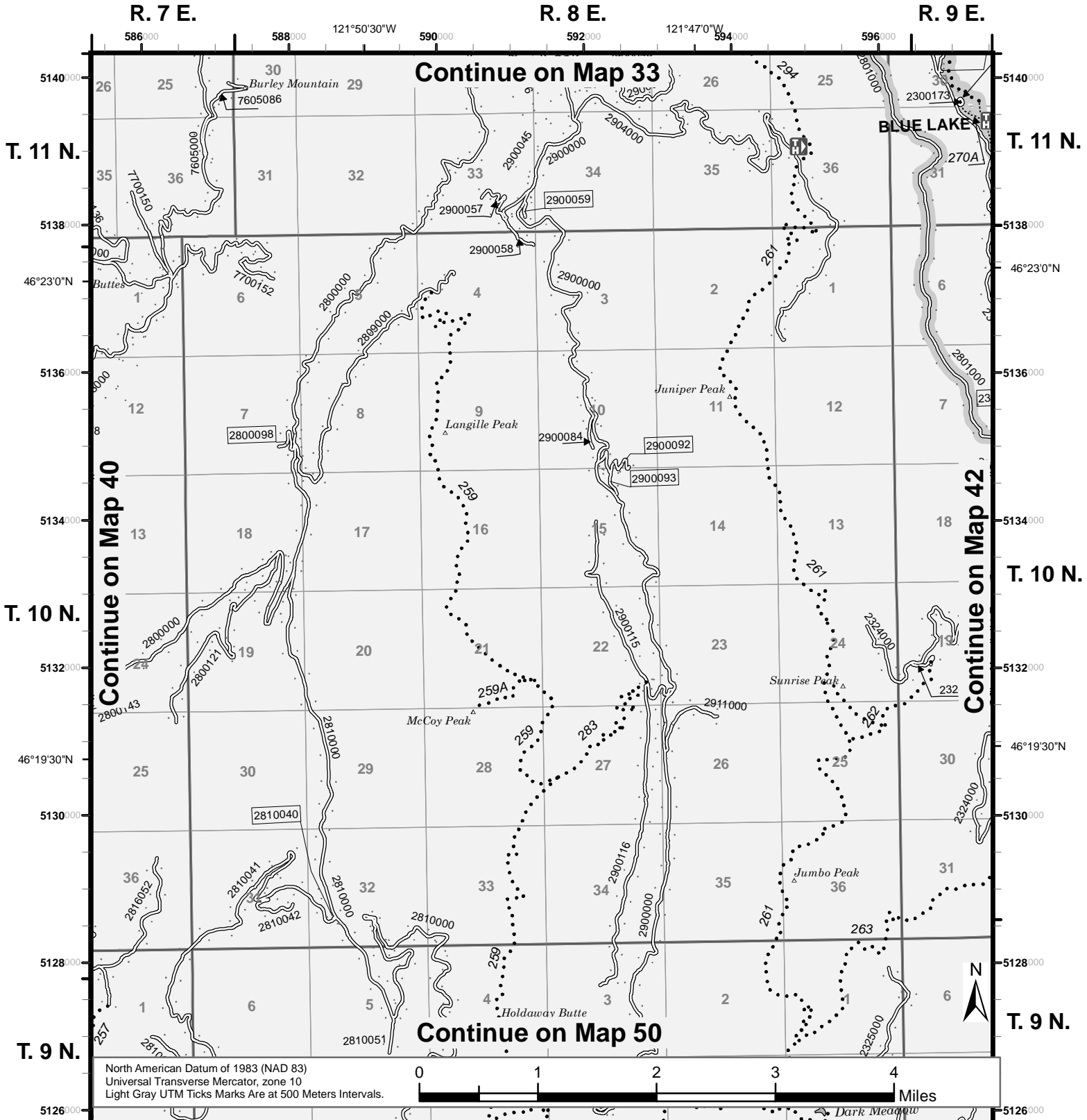
Roads Open to Highway Legal Vehicles Only	Dispersed Camping (See Dispersed Camping Table)	Forest or Unit Boundary	Visitor Information Service
Roads Open to All Vehicles	U.S. and State Highway	National Forest System Land	Recreation Site - Campground
Trails Open to Motorcycles Only	Other Public Roads	Non-National Forest System Lands within this National Forest	Motorized Trail Access
Trails Open to Wheeled Vehicles 50' or Less	Short Route Identifier	Wilderness	Viewpoint
Seasonal Designation (See Table) (Used along with road or trail identified above)		Political Boundary	Picnic Area
		Lakes and Rivers	Peaks
		Township and Range Lines	Milepost Marker
		Section Lines	

# Map 41

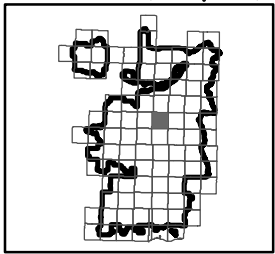
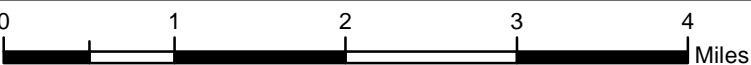


## Motor Vehicle Use Map 2015

## Gifford Pinchot National Forest



North American Datum of 1983 (NAD 83)  
 Universal Transverse Mercator, zone 10  
 Light Gray UTM Ticks Marks Are at 500 Meters Intervals.



Roads Open to Highway Legal Vehicles Only	Dispersed Camping (See Dispersed Camping Table)	Forest or Unit Boundary	Visitor Information Service
Roads Open to All Vehicles	U.S. and State Highway	National Forest System Land	Recreation Site - Campground
Trails Open to Motorcycles Only	Other Public Roads	Non-National Forest System Lands within this National Forest	Motorized Trail Access
Trails Open to Wheeled Vehicles 50' or Less	Short Route Identifier	Wilderness	Viewpoint
Seasonal Designation (See Table) (Used along with road or trail identified above)		Political Boundary	Picnic Area
		Lakes and Rivers	Peaks
		Township and Range Lines	Milepost Marker
		Section Lines	

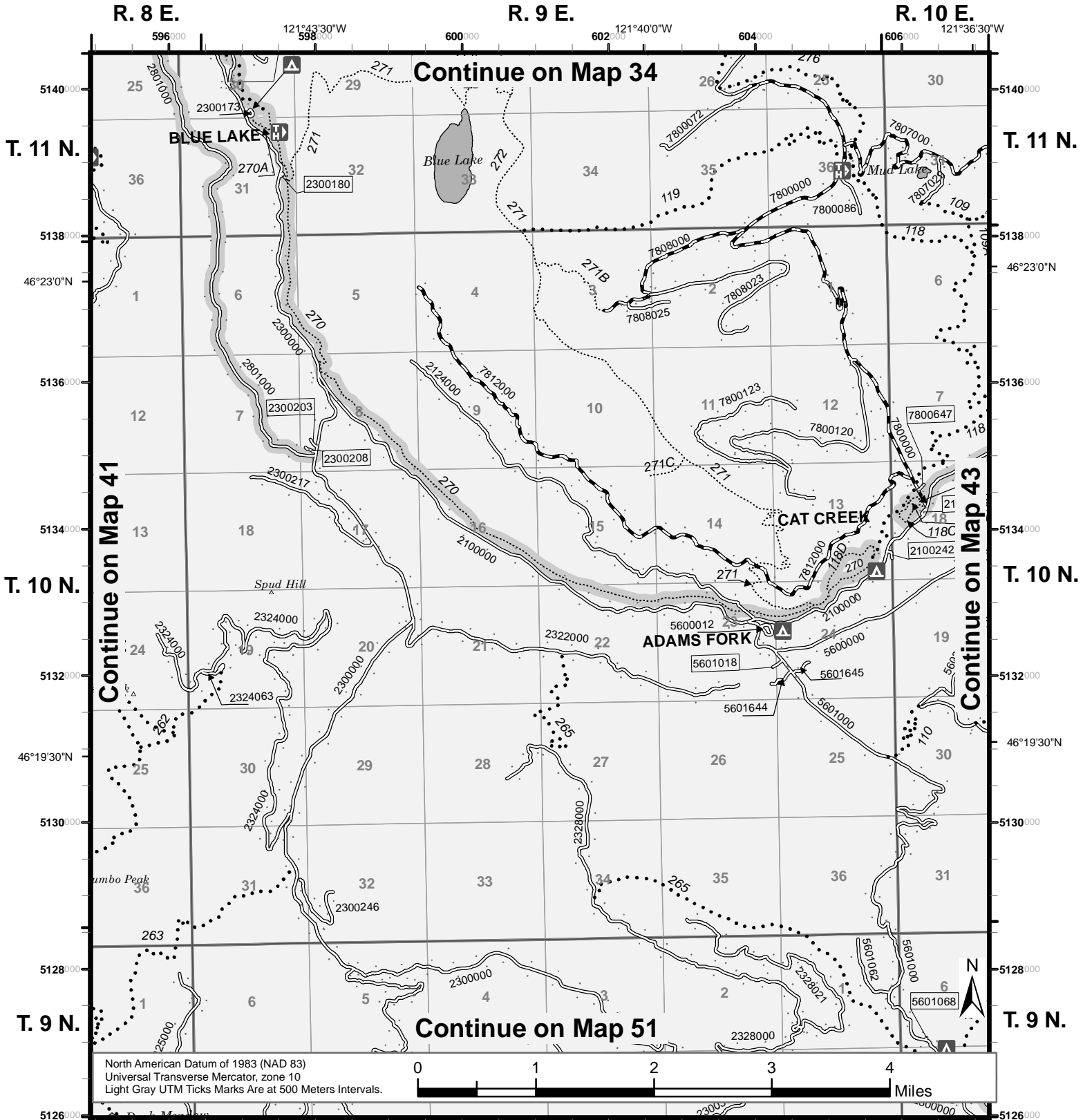
**LEGEND**  
 FS-873-0603

# Map 42

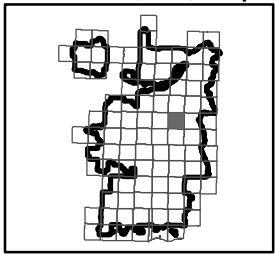


## Motor Vehicle Use Map 2015

## Gifford Pinchot National Forest



North American Datum of 1983 (NAD 83)  
 Universal Transverse Mercator, zone 10  
 Light Gray UTM Ticks Marks Are at 500 Meters Intervals.



Roads Open to Highway Legal Vehicles Only	Dispersed Camping (See Dispersed Camping Table)	Forest or Unit Boundary	Visitor Information Service
Roads Open to All Vehicles	U.S. and State Highway	National Forest System Land	Recreation Site - Campground
Trails Open to Motorcycles Only	Other Public Roads	Non-National Forest System Lands within this National Forest	Motorized Trail Access
Trails Open to Wheeled Vehicles 50' or Less	Short Route Identifier	Wilderness	Viewpoint
Seasonal Designation (See Table) (Used along with road or trail identified above)		Political Boundary	Picnic Area
		Lakes and Rivers	Peaks
		Township and Range Lines	Milepost Marker
		Section Lines	

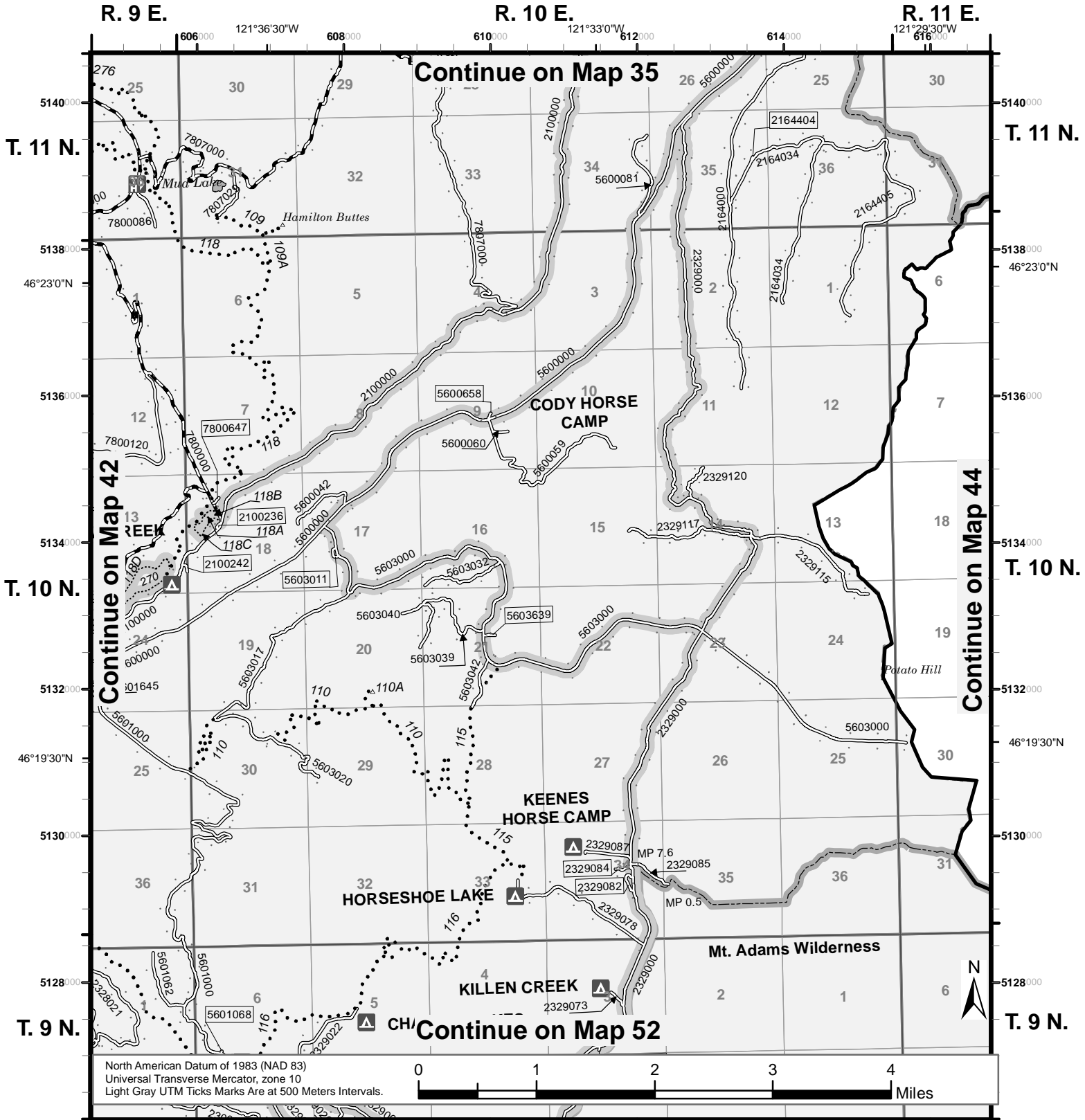
**LEGEND**  
 FS-873-0603

# Map 43

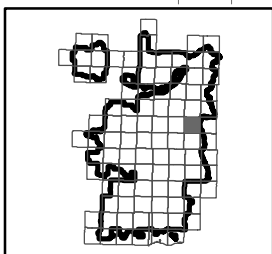


## Motor Vehicle Use Map 2015

## Gifford Pinchot National Forest



North American Datum of 1983 (NAD 83)  
 Universal Transverse Mercator, zone 10  
 Light Gray UTM Ticks Marks Are at 500 Meters Intervals.



Roads Open to Highway Legal Vehicles Only	Dispersed Camping (See Dispersed Camping Table)	Forest or Unit Boundary	Visitor Information Service
Roads Open to All Vehicles	U.S. and State Highway	National Forest System Land	Recreation Site - Campground
Trails Open to Motorcycles Only	Other Public Roads	Non-National Forest System Lands within this National Forest	Motorized Trail Access
Trails Open to Wheeled Vehicles 50' or Less	Short Route Identifier	Wilderness	Viewpoint
Seasonal Designation (See Table) (Used along with road or trail identified above)		Political Boundary	Picnic Area
		Lakes and Rivers	Peaks
		Township and Range Lines	Milepost Marker
		Section Lines	

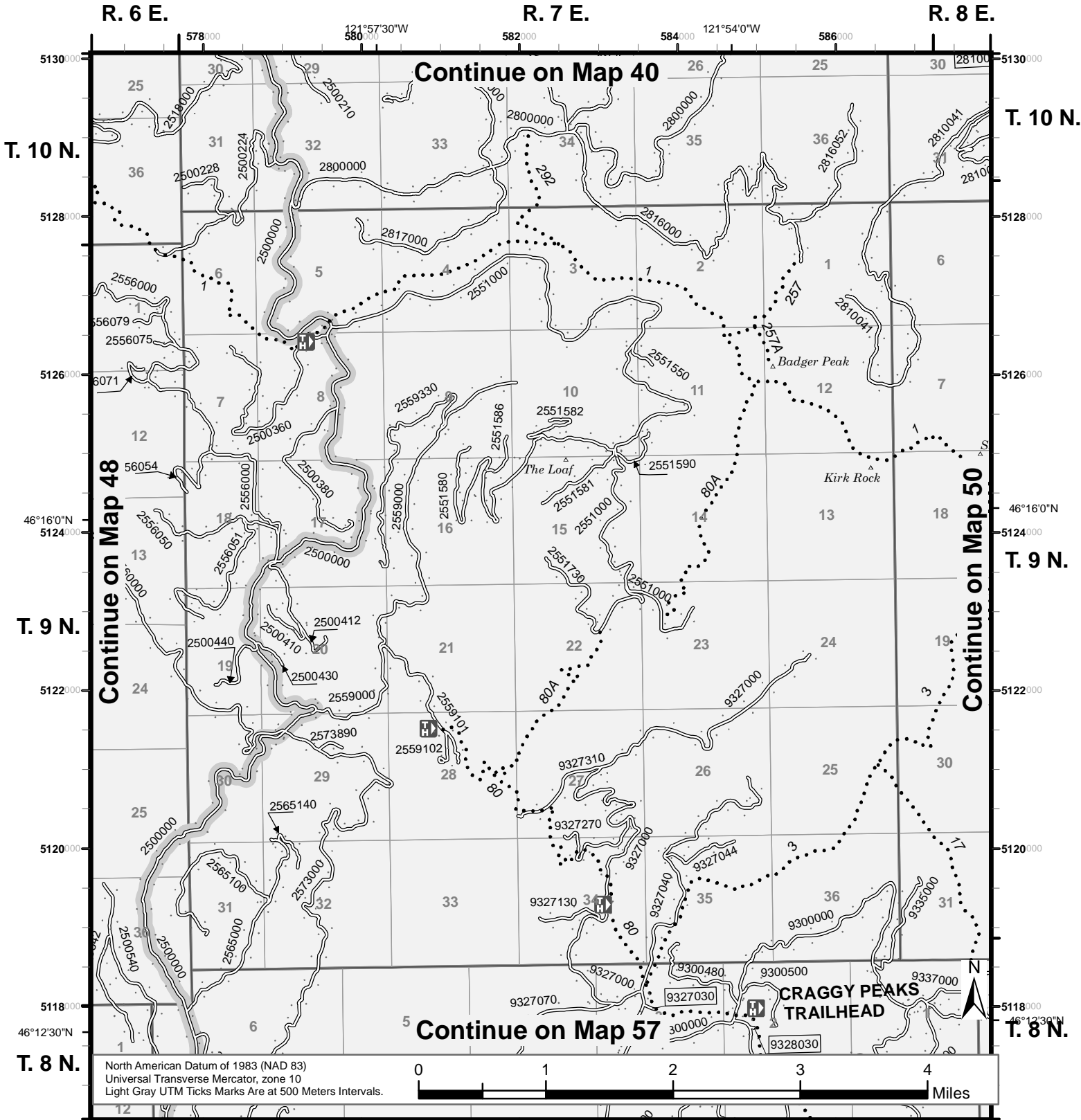
**LEGEND**  
 FS-873-0603

# Map 49

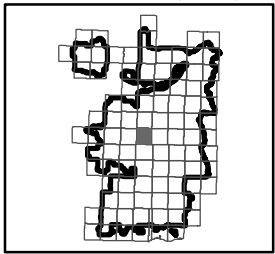
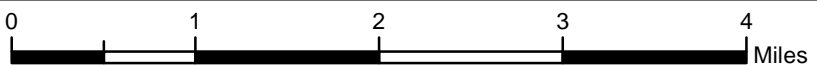


## Motor Vehicle Use Map 2015

## Gifford Pinchot National Forest



North American Datum of 1983 (NAD 83)  
 Universal Transverse Mercator, zone 10  
 Light Gray UTM Ticks Marks Are at 500 Meters Intervals.



Roads Open to Highway Legal Vehicles Only	Dispersed Camping (See Dispersed Camping Table)	Forest or Unit Boundary	Visitor Information Service
Roads Open to All Vehicles	U.S. and State Highway	National Forest System Land	Recreation Site - Campground
Trails Open to Motorcycles Only	Other Public Roads	Non-National Forest System Lands within this National Forest	Motorized Trail Access
Trails Open to Wheeled Vehicles 50" or Less	Short Route Identifier	Wilderness	Viewpoint
Seasonal Designation (See Table) (Used along with road or trail identified above)		Political Boundary	Picnic Area
		Lakes and Rivers	Peaks
		Township and Range Lines	Milepost Marker
		Section Lines	

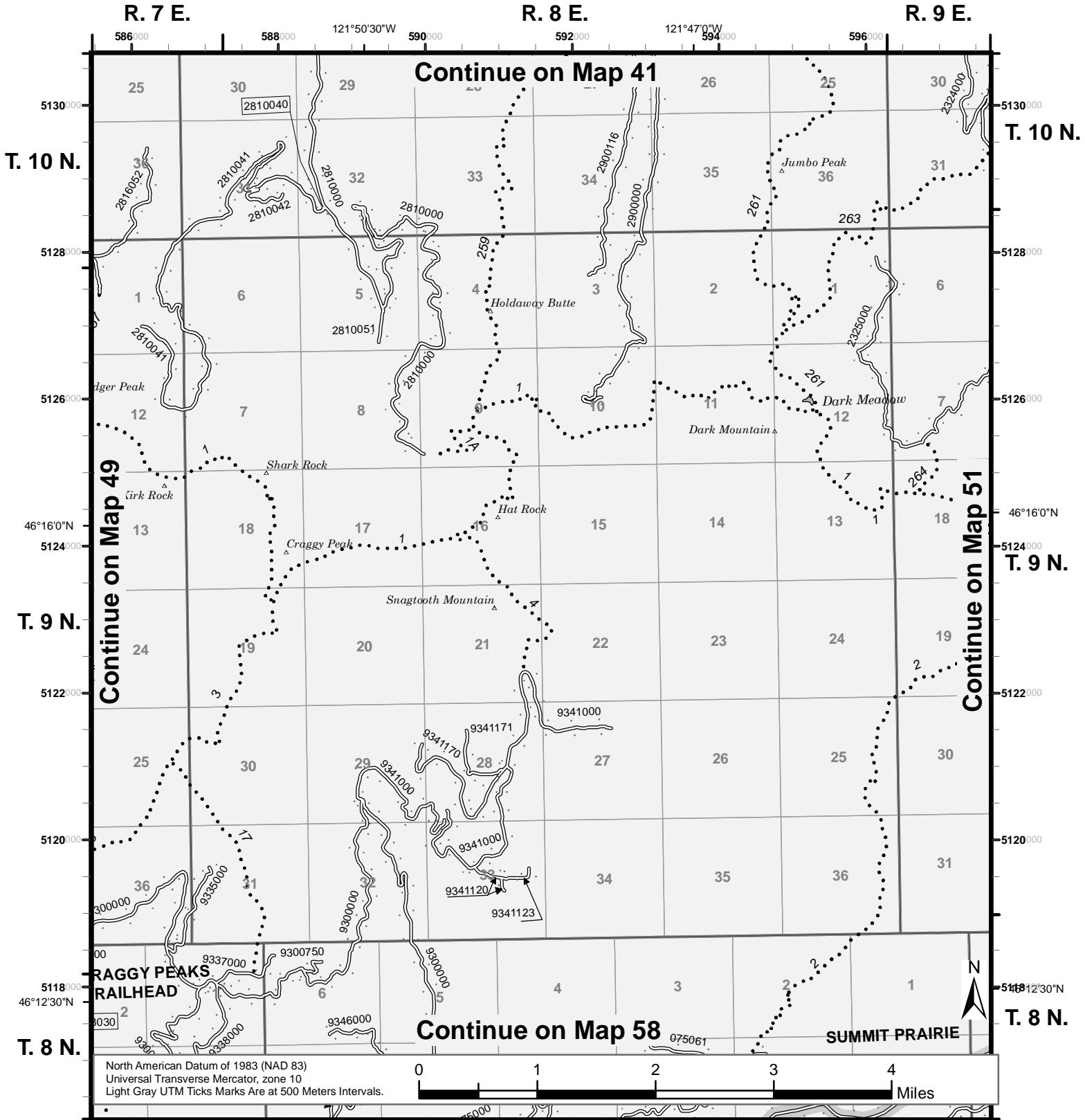
**LEGEND**  
 FS-873-0603

# Map 50

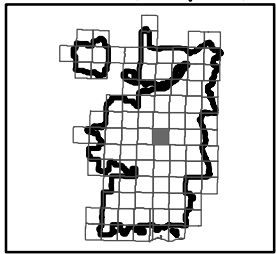


## Motor Vehicle Use Map 2015

## Gifford Pinchot National Forest



North American Datum of 1983 (NAD 83)  
 Universal Transverse Mercator, zone 10  
 Light Gray UTM Ticks Marks Are at 500 Meters Intervals.



Roads Open to Highway Legal Vehicles Only	Dispersed Camping (See Dispersed Camping Table)	Forest or Unit Boundary	Visitor Information Service
Roads Open to All Vehicles	U.S. and State Highway Other Public Roads	National Forest System Land	Recreation Site - Campground
Trails Open to Motorcycles Only	Short Route Identifier	Non-National Forest System Lands within this National Forest	Motorized Trail Access
Trails Open to Wheeled Vehicles 50' or Less	Seasonal Designation (See Table) (Used along with road or trail identified above)	Wilderness	Viewpoint
		Political Boundary	Picnic Area
		Lakes and Rivers	Peaks
		Township and Range Lines	Milepost Marker
		Section Lines	

**LEGEND**  
 FS-873-0603

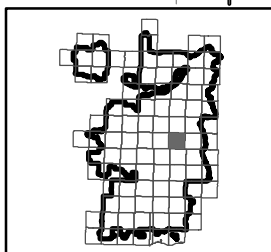
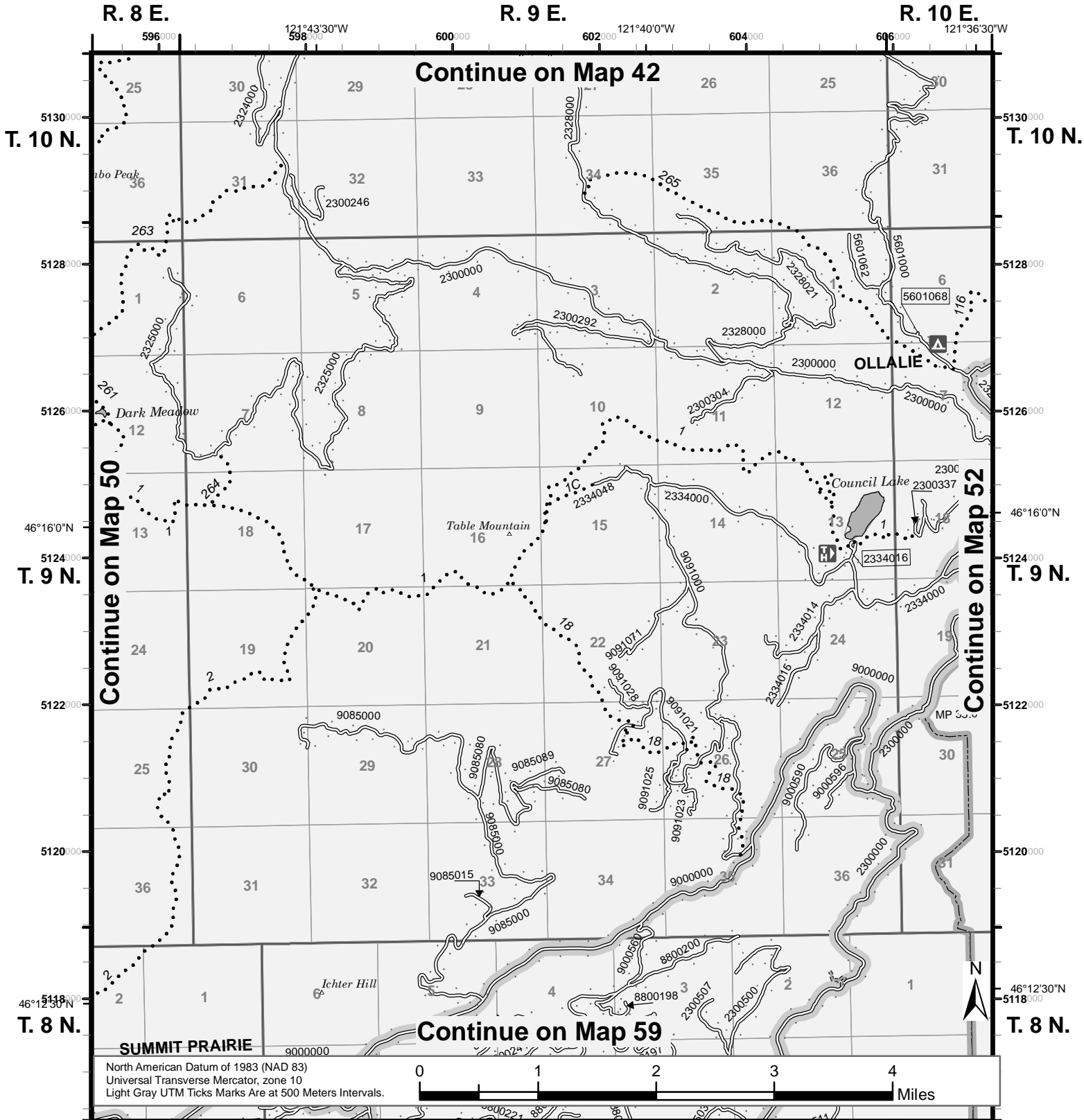


# Map 51



## Motor Vehicle Use Map 2015

## Gifford Pinchot National Forest



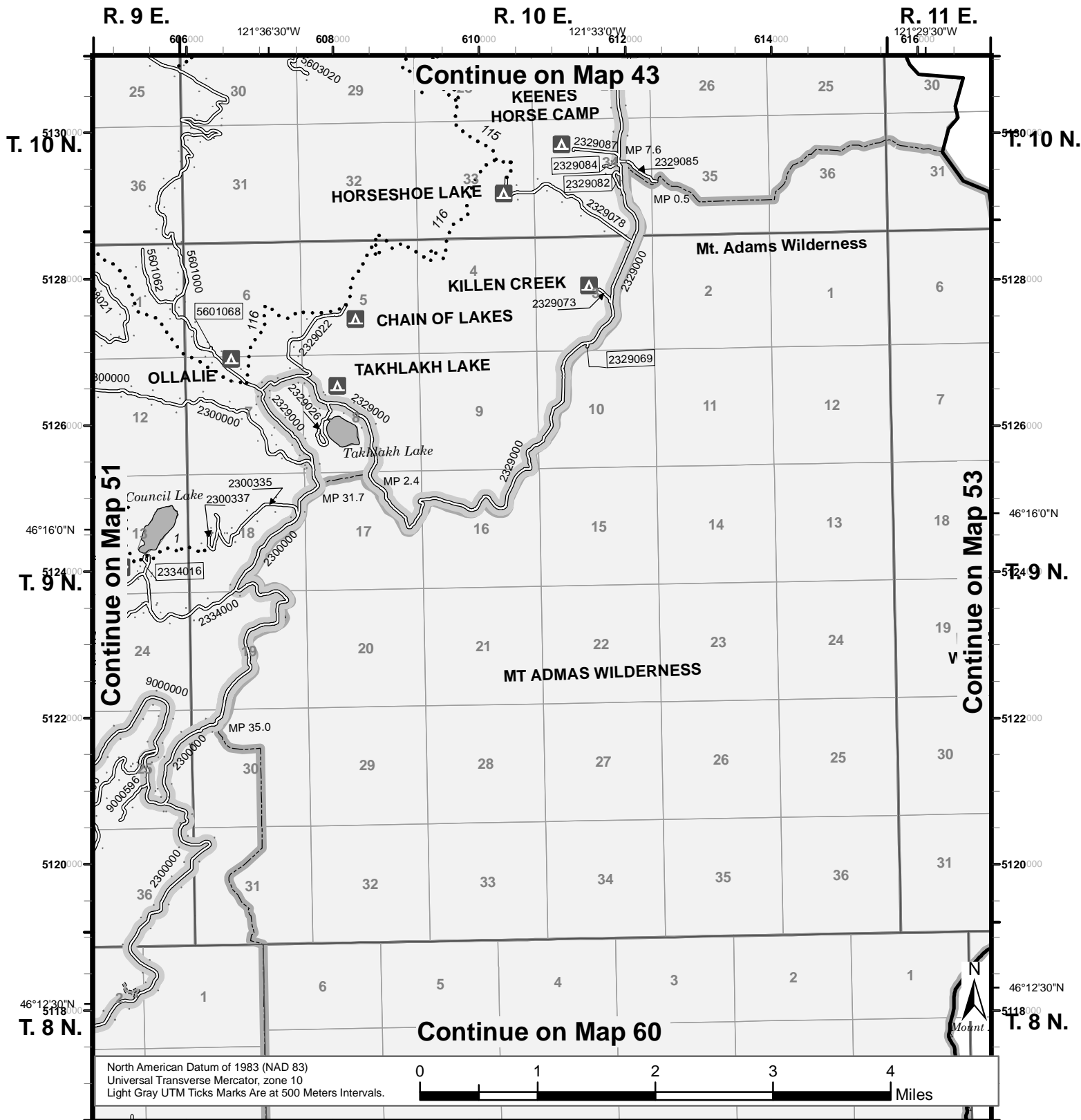
Roads Open to Highway Legal Vehicles Only	Dispersed Camping (See Dispersed Camping Table)	Forest or Unit Boundary	Visitor Information Service
Roads Open to All Vehicles	U.S. and State Highway	National Forest System Land	Recreation Site - Campground
Trails Open to Motorcycles Only	Other Public Roads	Non-National Forest System Lands within this National Forest	Motorized Trail Access
Trails Open to Wheeled Vehicles 50' or Less	Short Route Identifier	Wilderness	Viewpoint
Seasonal Designation (See Table) (Used along with road or trail identified above)		Political Boundary	Picnic Area
		Lakes and Rivers	Peaks
		Township and Range Lines	Milepost Marker
		Section Lines	

# Map 52

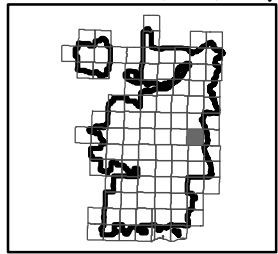
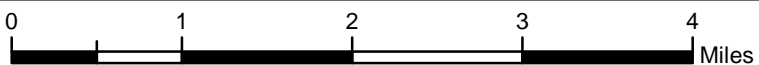


## Motor Vehicle Use Map 2015

## Gifford Pinchot National Forest



North American Datum of 1983 (NAD 83)  
 Universal Transverse Mercator, zone 10  
 Light Gray UTM Ticks Marks Are at 500 Meters Intervals.



Roads Open to Highway Legal Vehicles Only	Dispersed Camping (See Dispersed Camping Table)	Forest or Unit Boundary	Visitor Information Service
Roads Open to All Vehicles	U.S. and State Highway	National Forest System Land	Recreation Site - Campground
Trails Open to Motorcycles Only	Other Public Roads	Non-National Forest System Lands within this National Forest	Motorized Trail Access
Trails Open to Wheeled Vehicles 50' or Less	Short Route Identifier	Wilderness	Viewpoint
Seasonal Designation (See Table) (Used along with road or trail identified above)		Political Boundary	Picnic Area
		Lakes and Rivers	Peaks
		Township and Range Lines	Milepost Marker
		Section Lines	

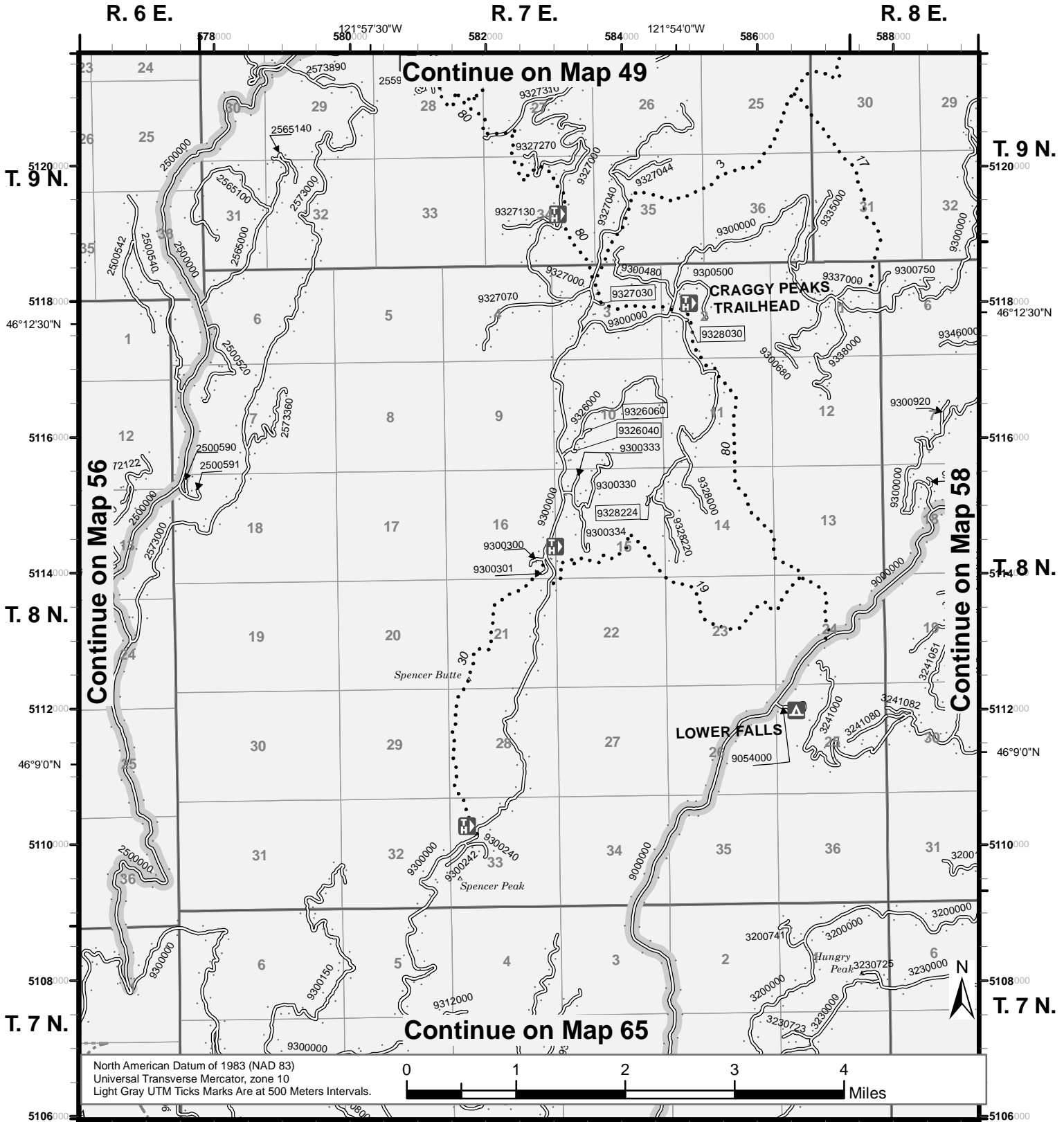
**LEGEND**  
 FS-873-0603

# Map 57

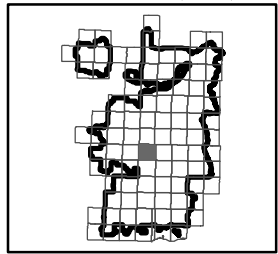


## Motor Vehicle Use Map 2015

## Gifford Pinchot National Forest



North American Datum of 1983 (NAD 83)  
 Universal Transverse Mercator, zone 10  
 Light Gray UTM Ticks Marks Are at 500 Meters Intervals.



Roads Open to Highway Legal Vehicles Only	Dispersed Camping (See Dispersed Camping Table)	Forest or Unit Boundary	Visitor Information Service
Roads Open to All Vehicles	U.S. and State Highway	National Forest System Land	Recreation Site - Campground
Trails Open to Motorcycles Only	Other Public Roads	Non-National Forest System Lands within this National Forest	Motorized Trail Access
Trails Open to Wheeled Vehicles 50" or Less	Short Route Identifier	Wilderness	Viewpoint
Seasonal Designation (See Table) (Used along with road or trail identified above)		Political Boundary	Picnic Area
		Lakes and Rivers	Peaks
		Township and Range Lines	Milepost Marker
		Section Lines	

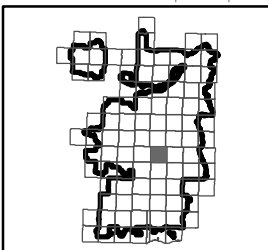
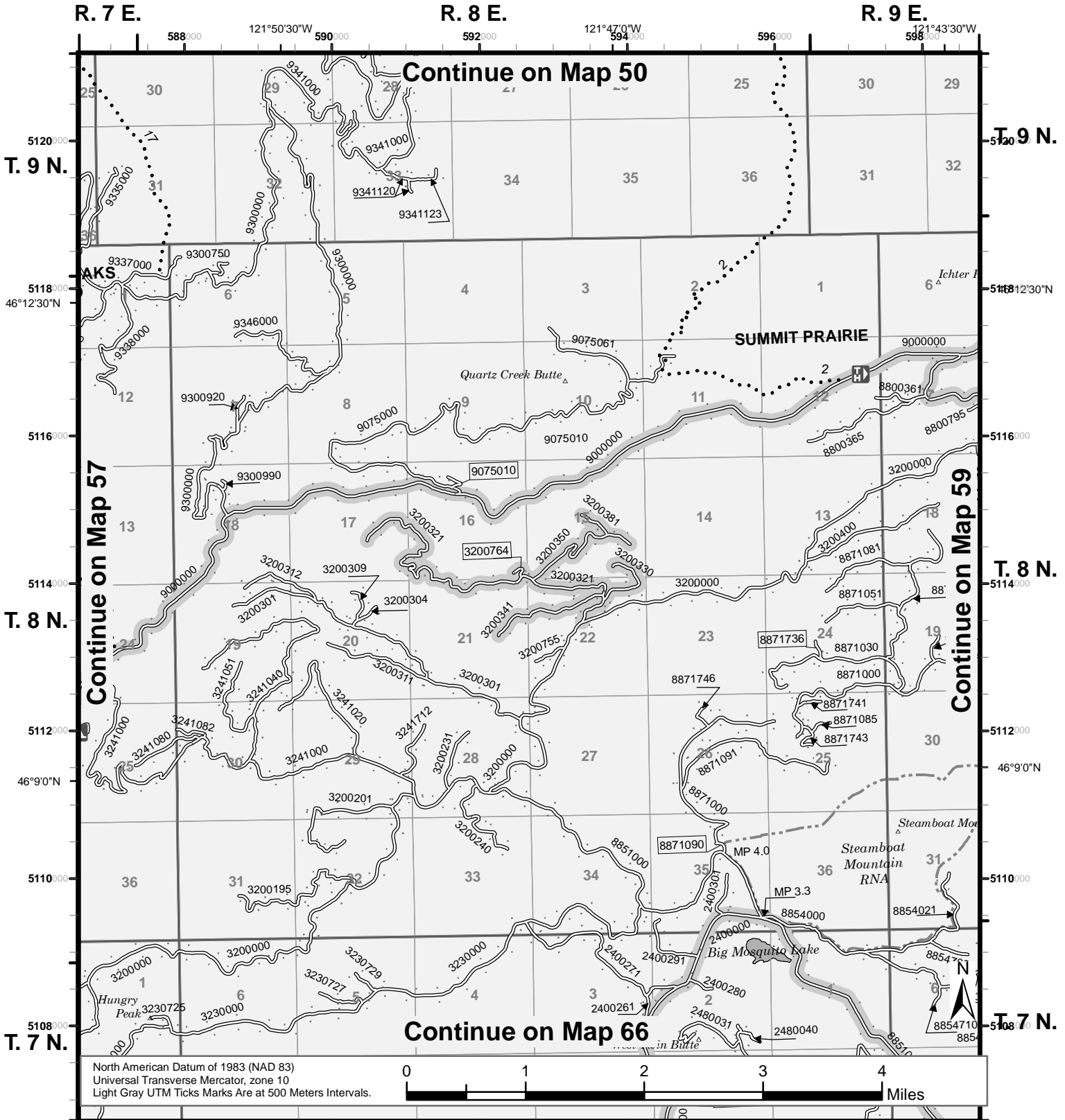
**LEGEND**  
 FS-873-0603

# Map 58



## Motor Vehicle Use Map 2015

## Gifford Pinchot National Forest



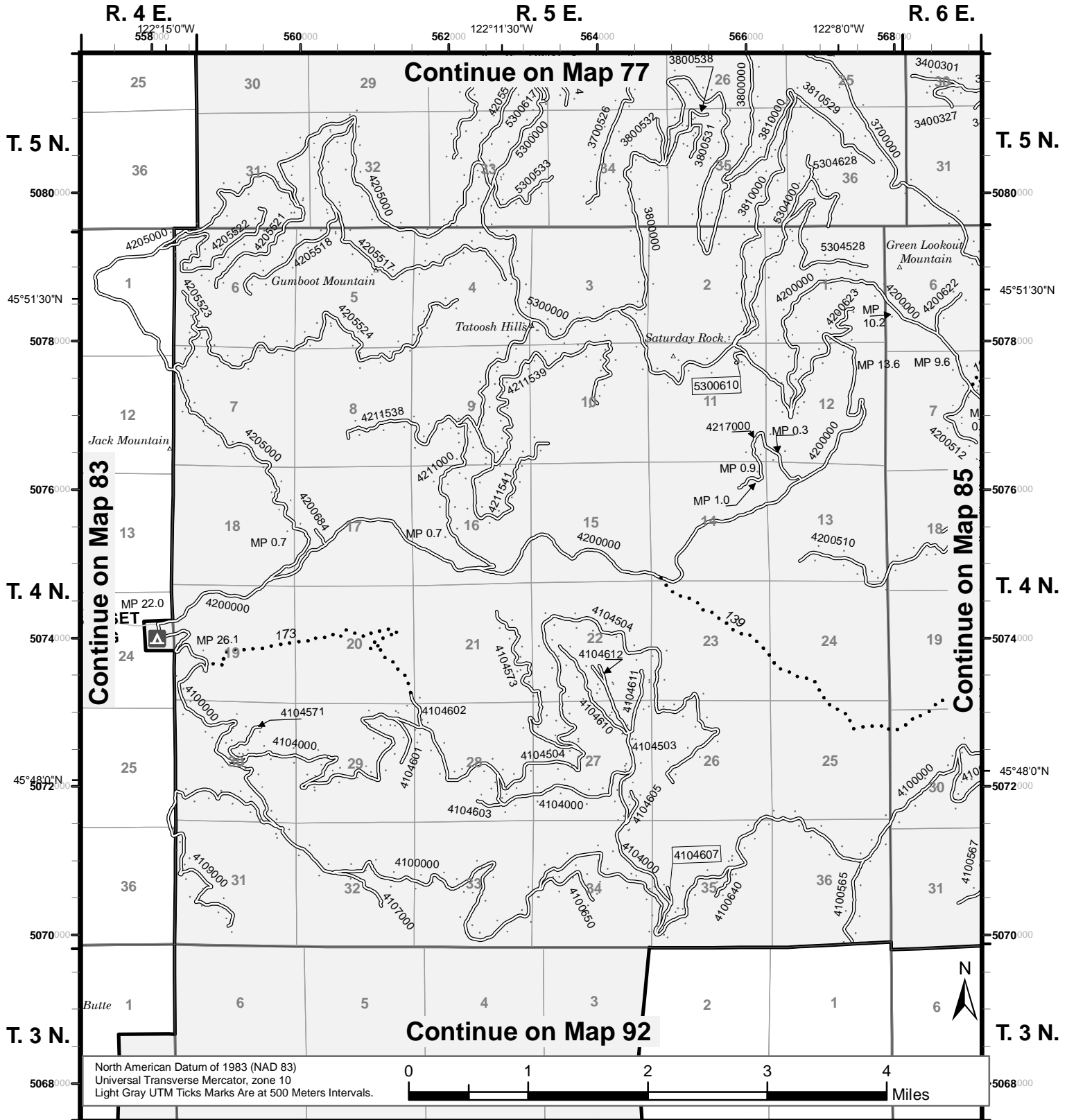
Roads Open to Highway Legal Vehicles Only	Dispersed Camping (See Dispersed Camping Table)	Forest or Unit Boundary	Visitor Information Service
Roads Open to All Vehicles	U.S. and State Highway	National Forest System Land	Recreation Site - Campground
Trails Open to Motorcycles Only	Other Public Roads	Non-National Forest System Lands within this National Forest	Motorized Trail Access
Trails Open to Wheeled Vehicles 50' or Less	Short Route Identifier	Wilderness	Viewpoint
Seasonal Designation (See Table) (Used along with road or trail identified above)		Political Boundary	Picnic Area
		Lakes and Rivers	Peaks
		Township and Range Lines	Milepost Marker
		Section Lines	

# Map 84

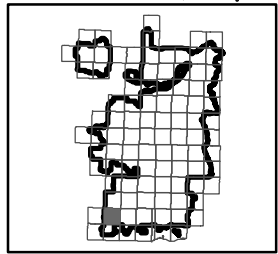
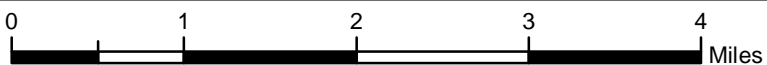


## Motor Vehicle Use Map 2015

## Gifford Pinchot National Forest



North American Datum of 1983 (NAD 83)  
 Universal Transverse Mercator, zone 10  
 Light Gray UTM Ticks Marks Are at 500 Meters Intervals.



Roads Open to Highway Legal Vehicles Only	Dispersed Camping (See Dispersed Camping Table)	Forest or Unit Boundary	Visitor Information Service
Roads Open to All Vehicles	U.S. and State Highway	National Forest System Land	Recreation Site - Campground
Trails Open to Motorcycles Only	Other Public Roads	Non-National Forest System Lands within this National Forest	Motorized Trail Access
Trails Open to Wheeled Vehicles 50" or Less	Short Route Identifier	Wilderness	Viewpoint
Seasonal Designation (See Table) (Used along with road or trail identified above)		Political Boundary	Picnic Area
		Lakes and Rivers	Peaks
		Township and Range Lines	Milepost Marker
		Section Lines	

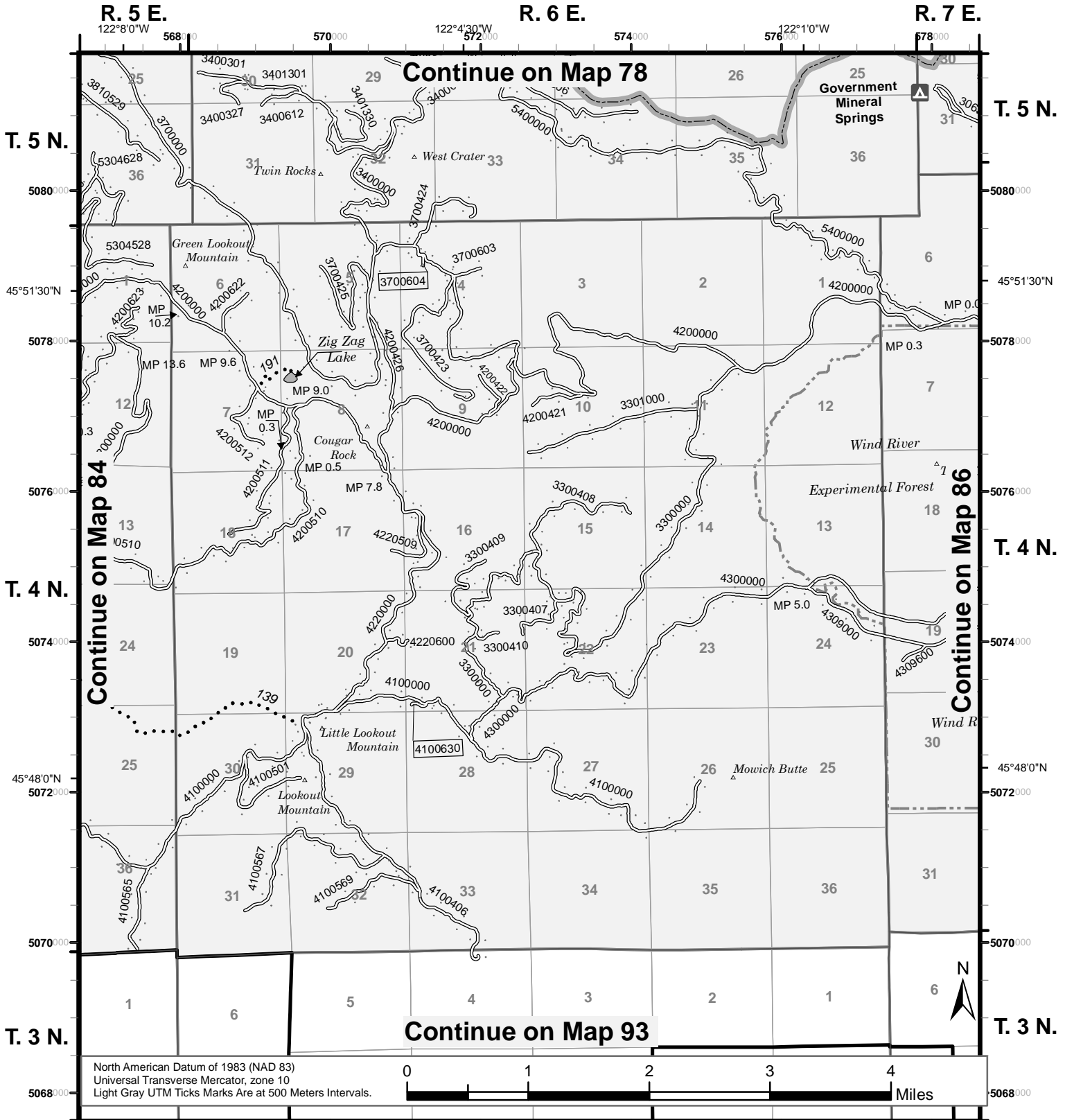
**LEGEND**  
 FS-873-0603

# Map 85

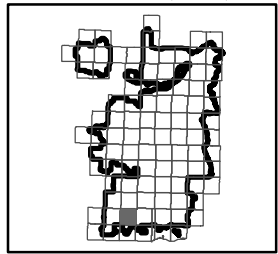


## Motor Vehicle Use Map 2015

## Gifford Pinchot National Forest



North American Datum of 1983 (NAD 83)  
 Universal Transverse Mercator, zone 10  
 Light Gray UTM Ticks Marks Are at 500 Meters Intervals.



Roads Open to Highway Legal Vehicles Only	Dispersed Camping (See Dispersed Camping Table)	Forest or Unit Boundary	Visitor Information Service
Roads Open to All Vehicles	U.S. and State Highway	National Forest System Land	Recreation Site - Campground
Trails Open to Motorcycles Only	Other Public Roads	Non-National Forest System Lands within this National Forest	Motorized Trail Access
Trails Open to Wheeled Vehicles 50' or Less	Short Route Identifier	Wilderness	Viewpoint
Seasonal Designation (See Table) (Used along with road or trail identified above)		Political Boundary	Picnic Area
		Lakes and Rivers	Peaks
		Township and Range Lines	Milepost Marker
		Section Lines	

**LEGEND**  
 FS-873-0603