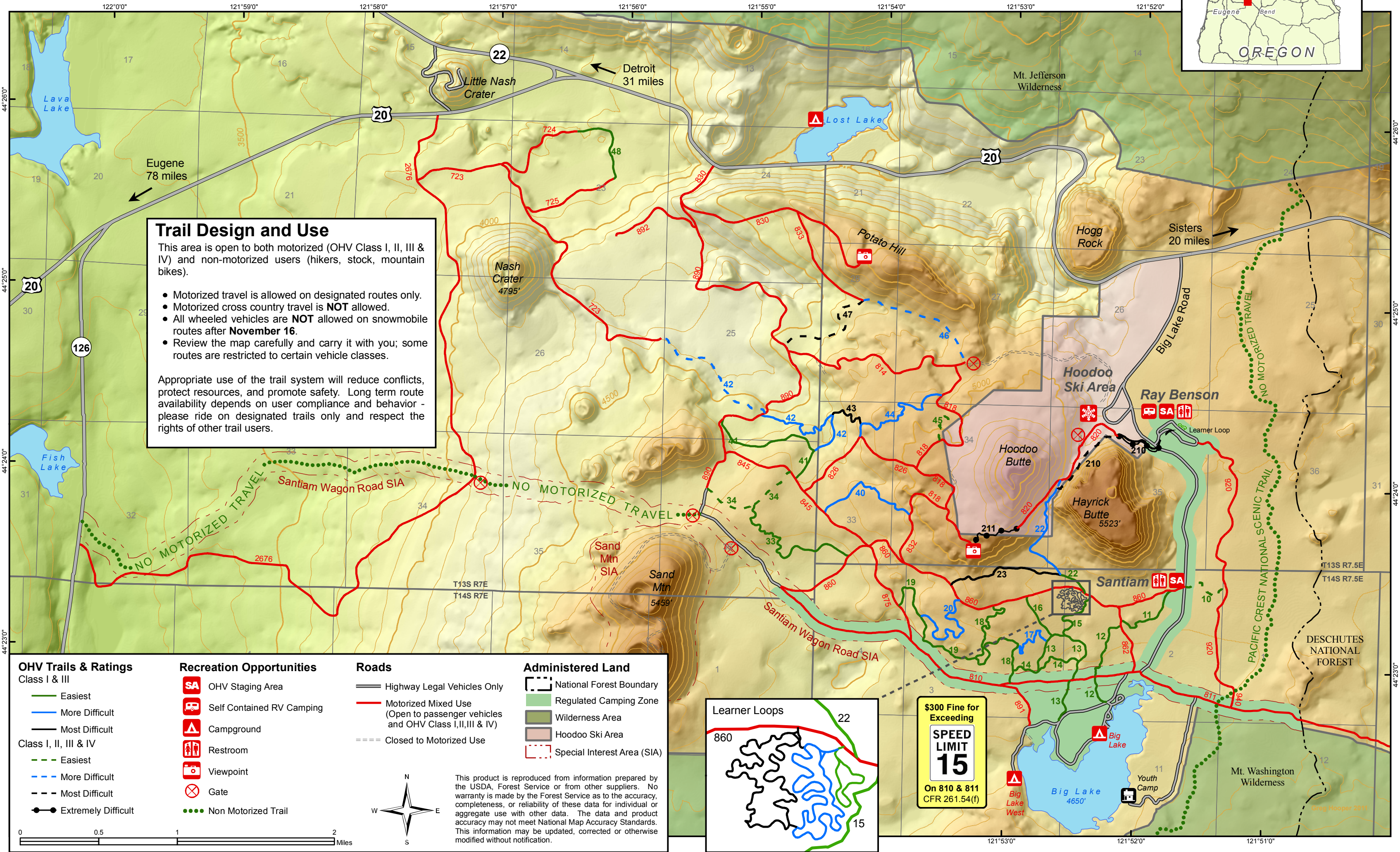


# SANTIAM PASS SUMMER MOTORIZED RECREATION AREA

## WILLAMETTE NATIONAL FOREST



### Trail Design and Use

This area is open to both motorized (OHV Class I, II, III & IV) and non-motorized users (hikers, stock, mountain bikes).

- Motorized travel is allowed on designated routes only.
- Motorized cross country travel is **NOT** allowed.
- All wheeled vehicles are **NOT** allowed on snowmobile routes after **November 16**.
- Review the map carefully and carry it with you; some routes are restricted to certain vehicle classes.

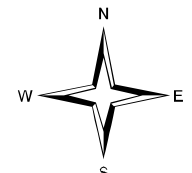
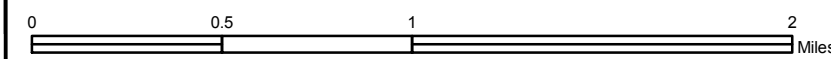
Appropriate use of the trail system will reduce conflicts, protect resources, and promote safety. Long term route availability depends on user compliance and behavior - please ride on designated trails only and respect the rights of other trail users.

- #### OHV Trails & Ratings
- Class I & III
- Easiest
  - More Difficult
  - Most Difficult
- Class I, II, III & IV
- - - Easiest
  - - - More Difficult
  - - - Most Difficult
  - Extremely Difficult

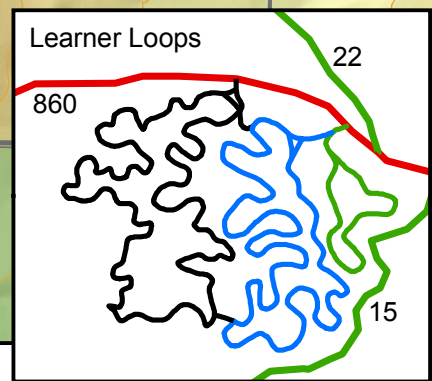
- #### Recreation Opportunities
- OHV Staging Area
  - Self Contained RV Camping
  - Campground
  - Restroom
  - Viewpoint
  - Gate
  - Non Motorized Trail

- #### Roads
- Highway Legal Vehicles Only
  - Motorized Mixed Use (Open to passenger vehicles and OHV Class I,II,III & IV)
  - - - Closed to Motorized Use

- #### Administered Land
- National Forest Boundary
  - Regulated Camping Zone
  - Wilderness Area
  - Hoodoo Ski Area
  - Special Interest Area (SIA)



This product is reproduced from information prepared by the USDA, Forest Service or from other suppliers. No warranty is made by the Forest Service as to the accuracy, completeness, or reliability of these data for individual or aggregate use with other data. The data and product accuracy may not meet National Map Accuracy Standards. This information may be updated, corrected or otherwise modified without notification.



**\$300 Fine for Exceeding**  
**SPEED LIMIT 15**  
 On 810 & 811  
 CFR 261.54(f)

NO MOTORIZED TRAVEL

PACIFIC CREST NATIONAL SCENIC TRAIL

DESCHUTES NATIONAL FOREST

Mt. Washington Wilderness

Mt. Jefferson Wilderness

Youth Camp

Hoodoo Ski Area

Santiam

Ray Benson

Sisters 20 miles

Detroit 31 miles

Eugene 78 miles

Nash Crater 4795'

Sand Mtn 5459'

Hoodoo Butte

Hayrick Butte 5523'

Big Lake 4650'

Potato Hill

Hogg Rock

Little Nash Crater

Lost Lake

Lava Lake

Fish Lake

Learner Loop

Greg Hooper 2011