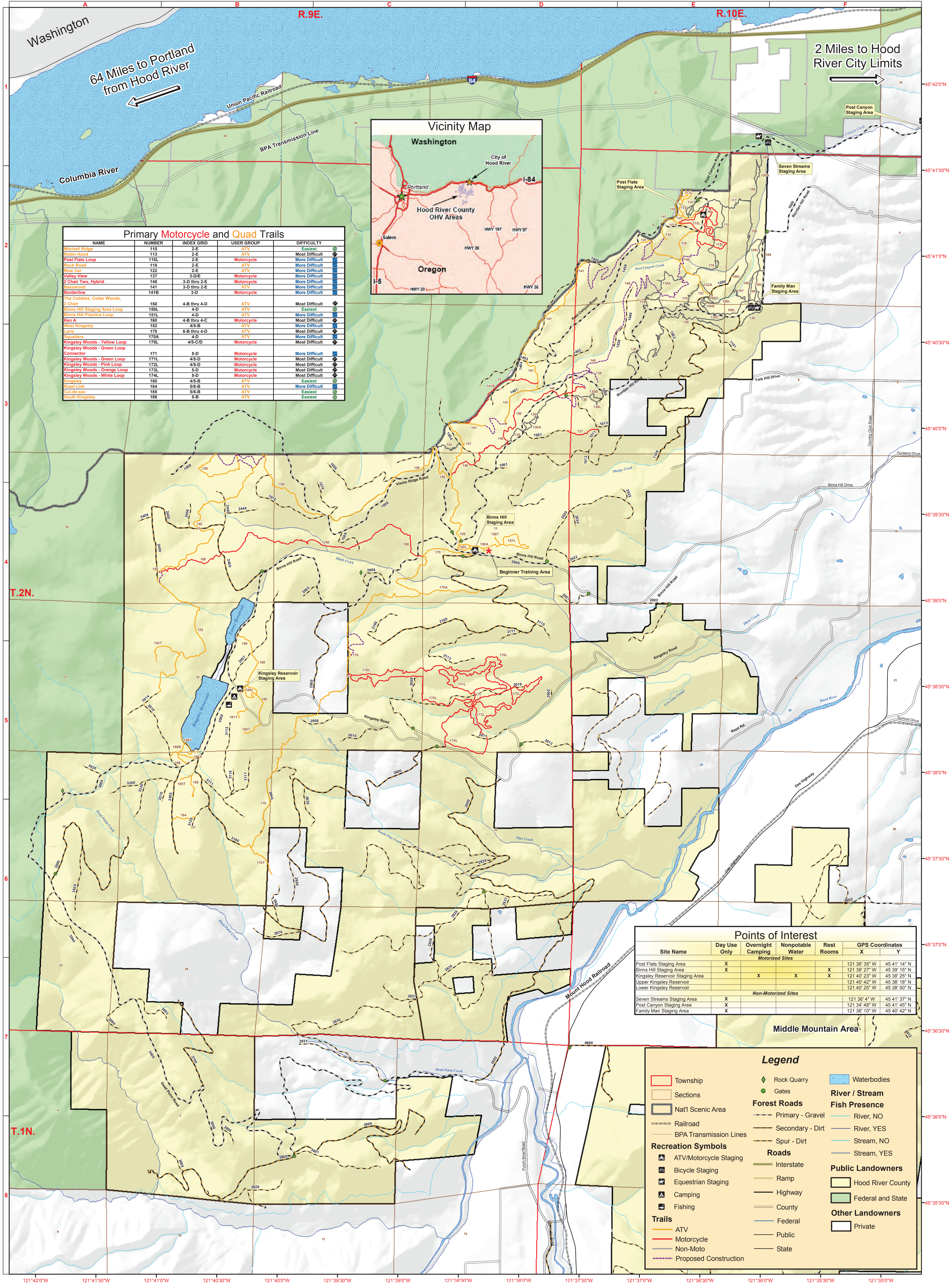
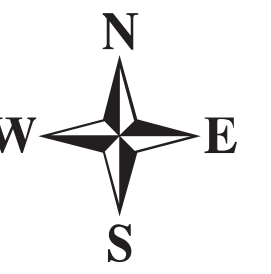


Hood River County Forestry Department Northwest Area Off Highway Vehicle Guide



NAME	NUMBER	INDEX GRID	USER GROUP	DIFFICULTY
Michell Ridge	110	2-E	ATV	Eastest
Robin Hood	113	2-E	ATV	Most Difficult
Post Flats Loop	115L	2-E	Motorcycle	More Difficult
Rock Road	118	2-E	ATV	More Difficult
Blue Cor	122	2-E	ATV	More Difficult
Valley View	137	3-D/E	Motorcycle	More Difficult
2 Chair Two, Hybrid	140	3-D thru 2-E	Motorcycle	More Difficult
Basewood	141	3-D thru 2-E	Motorcycle	More Difficult
Borderline	141B	3-D	Motorcycle	More Difficult
The Cobbles, Cedar Woods, 2 Chair	150	4-B thru 4-D	ATV	Most Difficult
Binns Hill Staging Area Loop	150L	4-D	ATV	Eastest
Binns Hill Practice Loop	151L	4-D	ATV	More Difficult
Ron A	160	4-B thru 4-C	Motorcycle	Most Difficult
West Kingsley	162	4-B	ATV	More Difficult
Larix	170	6-B thru 4-D	ATV	Most Difficult
Squatters	170A	4-D	ATV	More Difficult
Kingsley Woods - Yellow Loop	170L	4B-C/D	Motorcycle	More Difficult
Kingsley Woods - Green Loop	171	5-D	Motorcycle	More Difficult
Connector	171L	4B-D	Motorcycle	Most Difficult
Kingsley Woods - Green Loop	171L	4B-D	Motorcycle	Most Difficult
Kingsley Woods - Pink Loop	172L	4B-D	Motorcycle	Most Difficult
Kingsley Woods - Orange Loop	173L	5-D	Motorcycle	Most Difficult
Kingsley Woods - White Loop	174L	5-D	Motorcycle	Most Difficult
Kingsley	180	4B-B	ATV	Eastest
Road Link	184	5B-B	ATV	More Difficult
Cul-de-sac	185	5B-B	ATV	Eastest
South Kingsley	186	5-B	ATV	Eastest

Site Name	Day Use Only	Overnight Camping	Nonpotable Water	Rest Rooms	GPS Coordinates
	X			X	X Y
Post Flats Staging Area	X			X	121 36' 35" W 45 41' 14" N
Binns Hill Staging Area	X			X	121 38' 27" W 45 39' 15" N
Kingsley Reservoir Staging Area		X	X	X	121 40' 23" W 45 38' 25" N
Upper Kingsley Reservoir					121 40' 42" W 45 38' 18" N
Lower Kingsley Reservoir					121 40' 25" W 45 38' 50" N
Seven Streams Staging Area	X				121 38' 4" W 45 41' 37" N
Post Canyon Staging Area	X				121 34' 48" W 45 41' 45" N
Family Man Staging Area	X				121 36' 10" W 45 40' 42" N

Legend

- Township (Red outline)
- Sections (Orange outline)
- Nat'l Scenic Area (Blue outline)
- Railroad (Black dashed line)
- BPA Transmission Lines (Black solid line)
- Recreation Symbols:
 - ATV/Motorcycle Staging (ATV icon)
 - Bicycle Staging (Bicycle icon)
 - Equestrian Staging (Horse icon)
 - Camping (Tent icon)
 - Fishing (Fishing rod icon)
- Trails:
 - ATV (Red line)
 - Motorcycle (Orange line)
 - Non-Moto (Yellow line)
 - Proposed Construction (Dashed line)
- Rock Quarry (Green diamond)
- Gates (Green circle)
- Forest Roads:
 - Primary - Gravel (Red line)
 - Secondary - Dirt (Orange line)
 - Spur - Dirt (Yellow line)
- Roads:
 - Interstate (Thick black line)
 - Ramp (Thin black line)
 - Highway (Double black line)
 - County (Thin black line)
 - Federal (Thin black line)
 - Public (Thin black line)
 - State (Thin black line)
- Waterbodies (Blue area)
- River / Stream:
 - River, NO (Blue line)
 - River, YES (Blue line with wavy)
 - Stream, NO (Blue line)
 - Stream, YES (Blue line with wavy)
- Fish Presence (Blue line with fish)
- Public Landowners:
 - Hood River County (Light green)
 - Federal and State (Light green)
- Other Landowners:
 - Hood River County (Light green)
 - Federal and State (Light green)
 - Private (White)



Disclaimer: This map is intended for general reference only. Hood River County makes every effort to ensure that the data used to produce this map is a true representation. However, the County makes no warranty, expressed or implied, regarding the accuracy or completeness of any information disclosed. The County accepts no liability for any damage or injury caused by the use of this map. Proprietary information: Any resale of this information is prohibited, except in accordance with a licensing agreement.