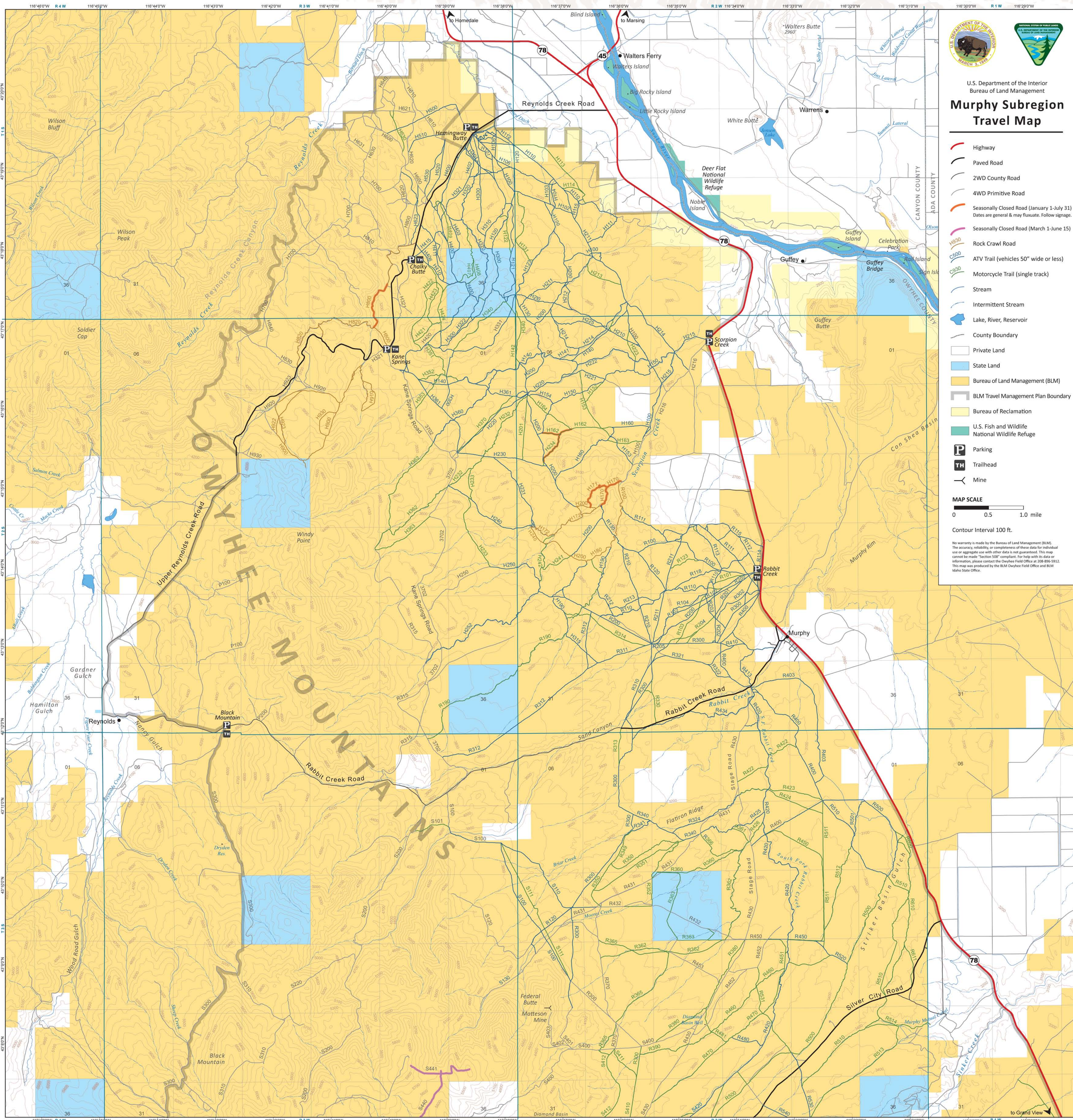


Murphy Subregion Travel Map - North Area



The Murphy Subregion Travel Map

This map depicts travel routes available for public use established by the Bureau of Land Management's Murphy Subregion Travel Management Plan (2009). All motorized travel is limited to designated roads, primitive roads, and trails. For more information contact the Owyhee Field Office at 1-208-896-5912.

Designated Routes

ROAD: A linear route declared a road by the owner, managed for use by low-clearance vehicles having four or more wheels, and maintained for regular and continuous use.

PRIMITIVE ROAD: A linear route managed for use by four-wheel drive or high-clearance vehicles. These roads do not normally meet any BLM road design standards.

Rock Crawl (Primitive) Road for extreme off-road driving over very harsh terrain including boulders, rock piles, mountain trails, etc.

SEASONALLY CLOSED: Allows for travel at certain times of year as specified by the travel management plan for the protection of wildlife.

TRAIL: A linear route managed for human-powered, stock, or off-highway vehicle forms of transportation or for historical or heritage values. Trails are not generally managed for use by four-wheel drive or high-clearance vehicles. On this map, there are two motorized trail types:

ATV Trail (50" wide or less, allows for travel by ATVs, off-highway motorcycles and non-motorized uses. **UTV and vehicles wider than 50 inches are prohibited on ATV trails.**

Motorcycle Trail (single track)

Designated Routes = Brown Posts



Travel Restrictions

Permission from private land owners is required to cross private land, unless access is provided by a Federal, State, or County road with legal access.

Travel restrictions are in effect in certain areas to protect wildlife. Roads designated with "Seasonal Closures" may only be used during the open period. Public lands that are surrounded by private land may not be accessible.

Know Regulations And Rules

Register your vehicle. The State of Idaho requires every OHV to display its registration sticker.

Operation of Off-Highway-Vehicles (OHV) on public lands must be in accordance with Federal and state rules. These include but are not limited to:

- Muffler and approved spark arrestor <96 db at the 1/2 meter test (IC 67-1215);
- No OHV operation in areas closed to use (43 Code of Federal Regulations (CFR) 8341.1(c));
- No person shall operate an OHV on public lands in a manner causing, or likely to cause significant, undue damage to or disturbance of the soil, wildlife habitat, improvements, cultural, or vegetative resources or other authorized uses of public lands (43 CFR 8341.1(f)(4));
- Travel permitted on routes designated with **brown posts only**; and
- Random hill climbing is prohibited.

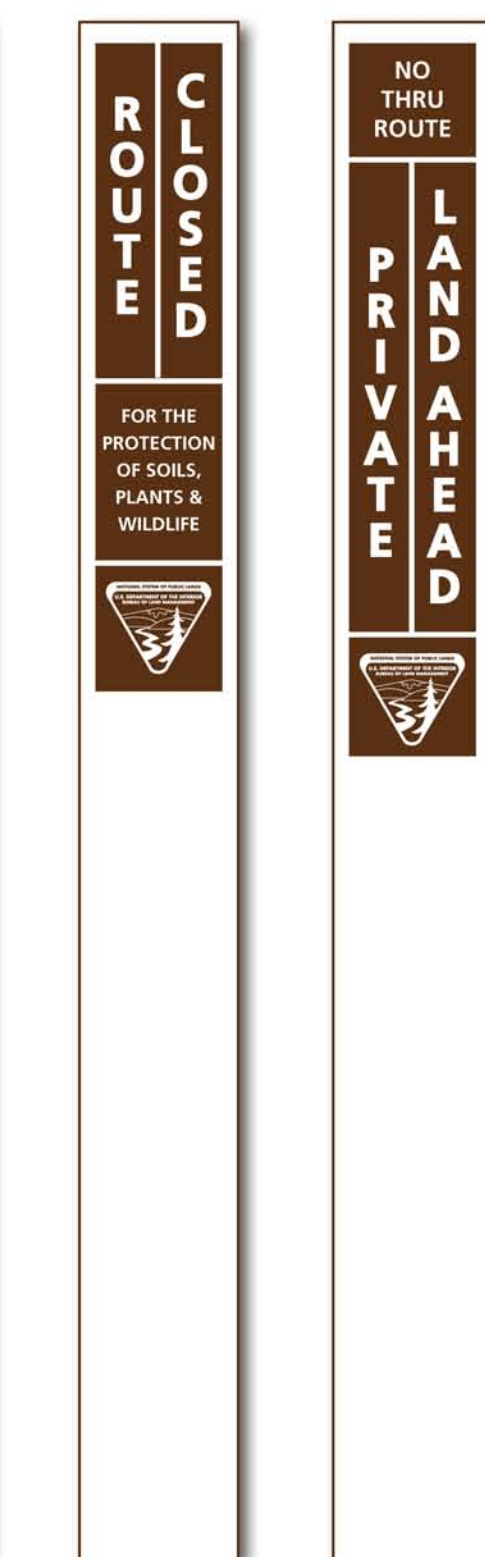
Camping

P TH Camping is permitted within parking areas and trailheads.

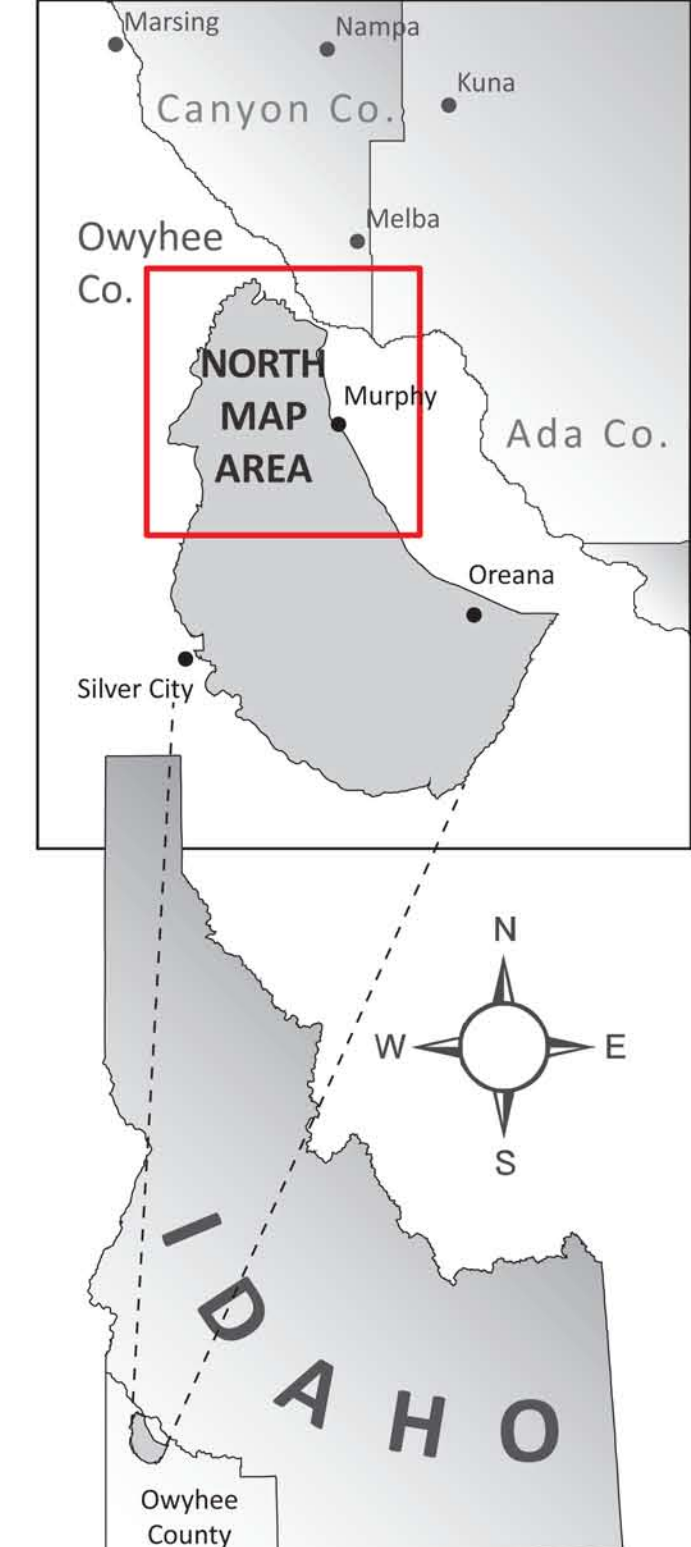
Non-motorized Travel and Recreation is permitted throughout the Murphy Subregion.



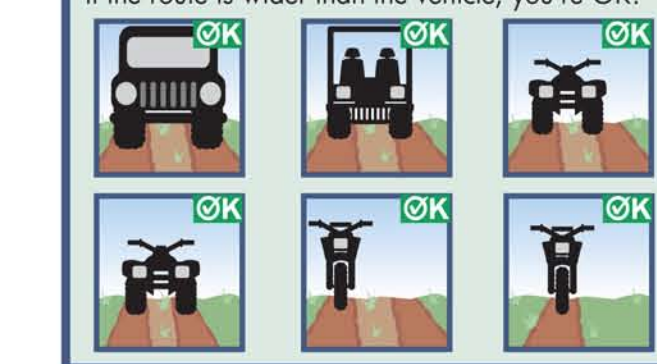
Closed or Restricted Routes = White Posts



Location Map



What is OK:



Get Dirty

Go straight through mud puddles while maintaining a steady speed. Don't get stuck.

Stay on Trails

Wetlands are important and sensitive areas for wildlife and people. Please avoid them.

No Shortcuts

Switchbacks are designed to maintain the stability of a trail, cutting them destroys their integrity.

What is NOT OK:



U.S. Department of the Interior
Bureau of Land Management

BLM Owyhee Field Office
20 First Avenue West
Marsing, ID 83639
(208) 896-5912

www.blm.gov/id/st/en.html



EMERGENCY CONTACTS
Emergency 911

Owyhee County Sheriff
(208) 495-1154

Idaho State Police
1-208-884-7360

Report All Wildfires
BLM Interagency Dispatch
(208) 384-3400

Ride Responsibly on Public Lands

Share the trails. Make friends with other trail users. Stop or slow down and lower the noise and dust levels when approaching equestrians, hikers and other land users. Yield the right of way to those passing or traveling uphill.

Maintain your equipment and pack the right gear. Maintain your exhaust system and know the sound limits where you ride. Remember, noise doesn't equal horsepower. Too little exhaust back-pressure can cause less power and engine damage.

Wear your helmet. It will save your life. Remember Idaho State Law requires kids 17 and under to wear a helmet.

View animals from a distance. When they flee they use valuable energy reserves.

Respect seasonal closures. Animals need places where they can survive the winter, reproduce, and raise their young undisturbed.

Dispose of trash properly. Pack it in and pack it out!

Leave gates as you find them. Gates are a vital part of an area's livestock grazing.

Go to Idaho Parks and Recreation's website at stayontrails.com for more information. Thank you.

