

MILLICAN VALLEY OHV TRAIL SYSTEM

Bureau of Land Management - Prineville District



LEGEND

OHV Routes & Ratings
 Designated OHV routes subject to SEASONAL USE closures

- Easiest Trail (Class I & III)
- More Difficult Trail (Class I & III)
- Most Difficult Trail (Class I & III)
- Motorcycle Trail (Class III - with difficulty rating)
- Shared Use Road (Class I, II & III -- Seasonally open to non street legal OHV's)
- Seasonal Wildlife Closure

* 5 * Mileage Between Markers

55 Trail Number

Recreation Opportunities

- SA OHV Staging Area
- PA OHV Play Area
- C OHV Trail Underpass
- V Viewpoint
- TH Trailhead, Non-Motorized

Closed to Motorized Use Year Round
 Seasonally Closed to All Entry

Transportation

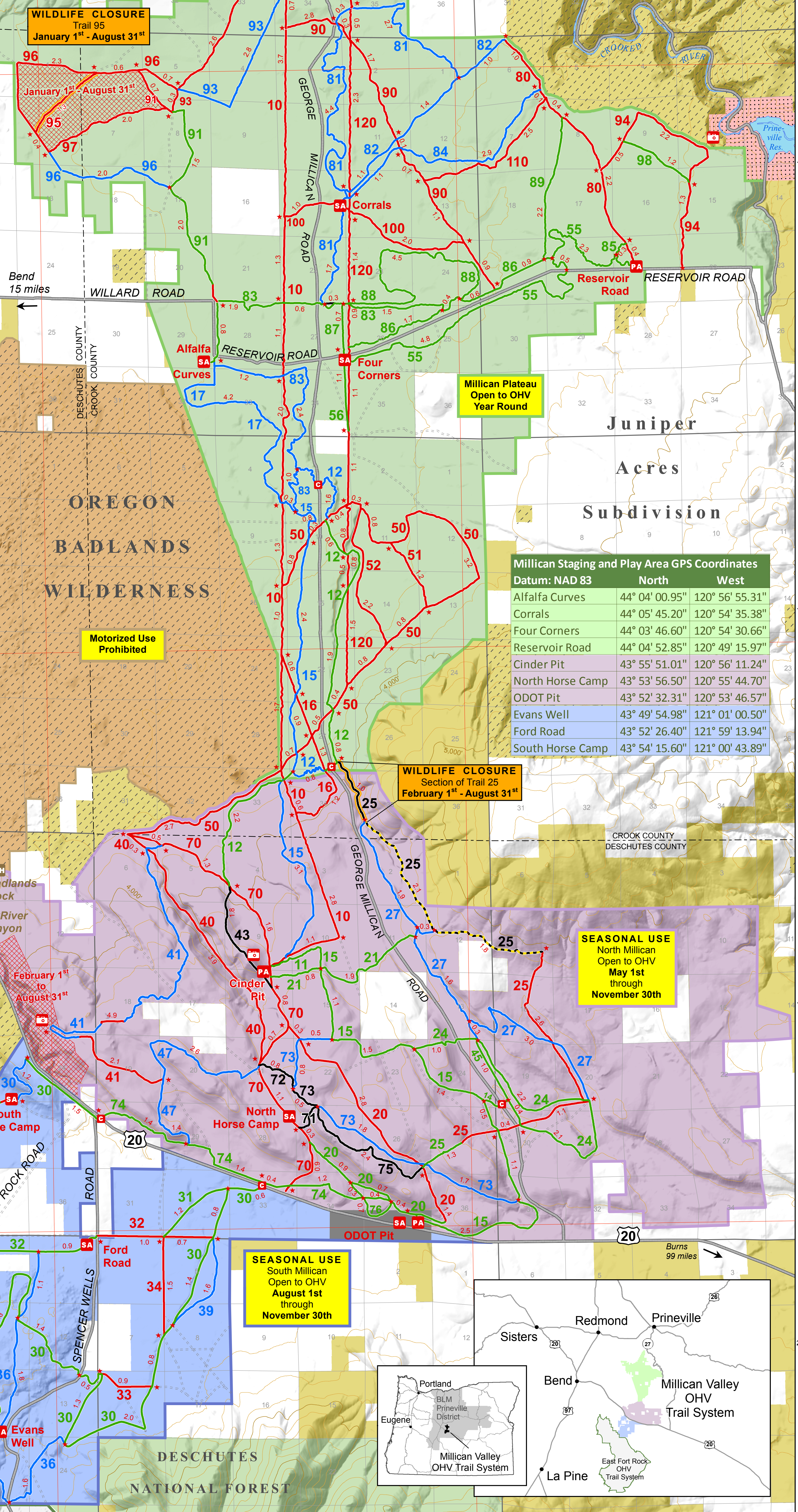
- Paved Route
- Gravel or Native Surface Route

Administered Land

- Millican Plateau OHV Area
- North Millican OHV Area
- South Millican OHV Area
- East Fort Rock OHV Area
- Oregon Badlands Wilderness
- Bureau of Land Management
- Deschutes National Forest
- Local Government
- Bureau of Reclamation
- Private

Scale: 0 to 1 Mile, 0 to 2 Kilometers

No warranty is made by the Bureau of Land Management as to the accuracy, reliability, or completeness of these data for individual or aggregate use with other data. Original data were compiled from various sources. This information may not meet National Map Accuracy Standards. This product was developed through digital means and may be updated without notification.



Millican Staging and Play Area GPS Coordinates	North	West
Alfalfa Curves	44° 04' 00.95"	120° 56' 55.31"
Corral	44° 05' 45.20"	120° 54' 35.38"
Four Corners	44° 03' 46.60"	120° 54' 30.66"
Reservoir Road	44° 04' 52.85"	120° 49' 15.97"
Cinder Pit	43° 55' 51.01"	120° 56' 11.24"
North Horse Camp	43° 53' 56.50"	120° 55' 44.70"
ODOT Pit	43° 52' 32.31"	120° 53' 46.57"
Evans Well	43° 49' 54.98"	121° 01' 00.50"
Ford Road	43° 52' 26.40"	121° 59' 13.94"
South Horse Camp	43° 54' 15.60"	121° 00' 43.89"

SEASONAL USE
 South Millican
 Open to OHV
 August 1st through
 November 30th

SEASONAL USE
 North Millican
 Open to OHV
 May 1st through
 November 30th

WILDLIFE CLOSURE
 Section of Trail 25
 February 1st - August 31st

WILDLIFE CLOSURE
 Trail 95
 January 1st - August 31st

Motorized Use Prohibited

