

LEGEND

- TRAIL open to Hikers, Horses, Motorcycles, Mountain Bikes**
Trail Number in *italics*
Mileage between dots
- TRAIL with seasonal closure**
- TRAIL closed to motorized**
- TRAILHEAD**
- TRAIL RATING**
- HIGHWAY**
- GRAVEL OR DIRT ROAD**
- CAMPGROUND**

OFF-TRAIL TRAVEL CLOSURE
Affecting wheeled travel - Upper Mad River #1409.1

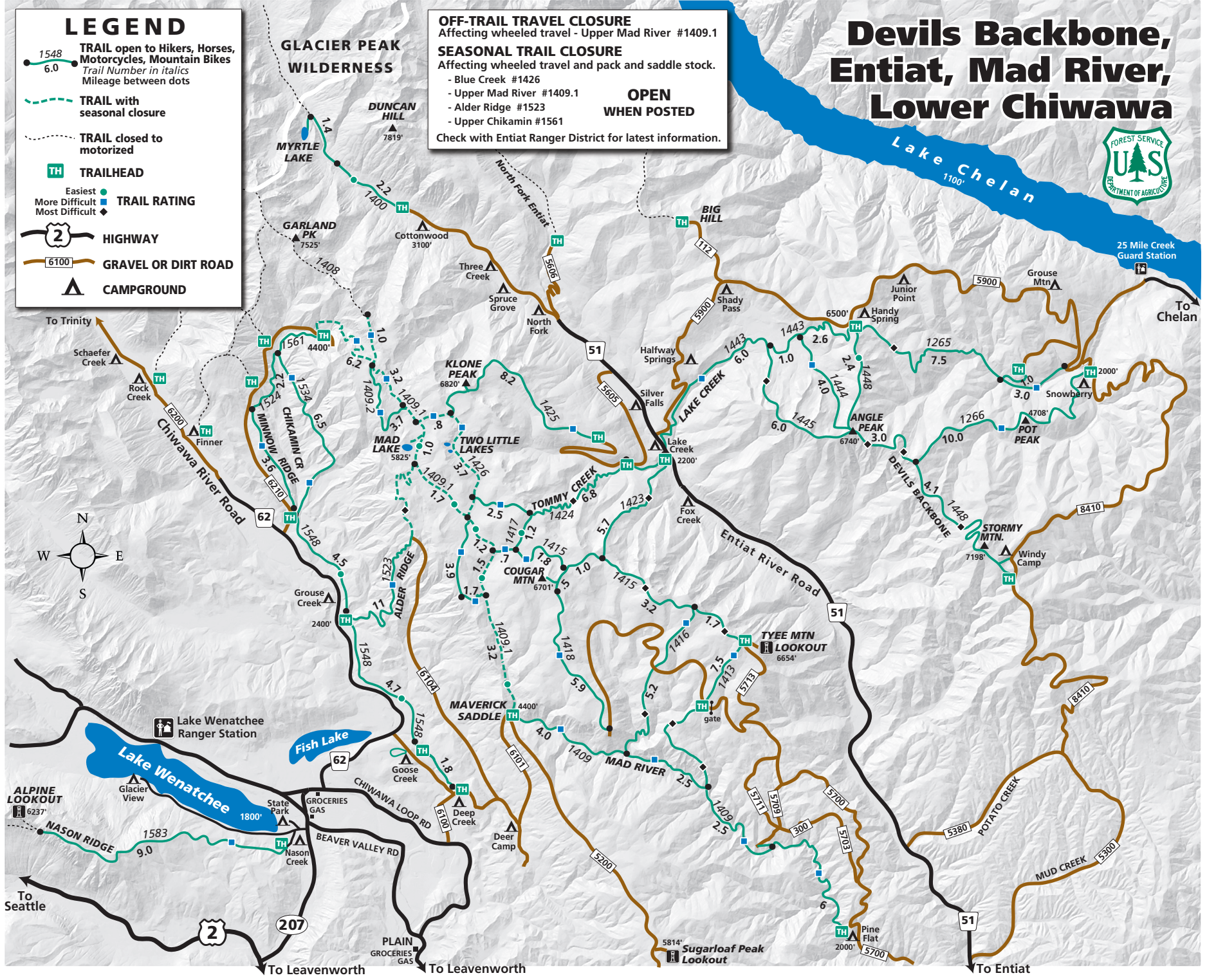
SEASONAL TRAIL CLOSURE
Affecting wheeled travel and pack and saddle stock.

- Blue Creek #1426
- Upper Mad River #1409.1
- Alder Ridge #1523
- Upper Chikamin #1561

OPEN WHEN POSTED

Check with Entiat Ranger District for latest information.

Devils Backbone, Entiat, Mad River, Lower Chiwawa



GLACIER PEAK WILDERNESS

DUNCAN HILL
7819'

MYRTLE LAKE

GARLAND PK
7525'

Cottonwood
3100'

Three Creek

Spruce Grove

North Fork

KLONE PEAK
6820'

TWO LITTLE LAKES

MAD LAKE
5825'

TOMMY CREEK
1424'

COUGAR MTN
6701'

Halfway Springs

Silver Falls

Lake Creek
2200'

TYEE MTN LOOKOUT
6654'

MAVERICK SADDLE
4400'

GOOSE CREEK

MAD RIVER

DEEP CREEK

Deer Camp

Sugarloaf Peak Lookout
5814'

Lake Chelan
1100'

25 Mile Creek Guard Station

To Chelan

To Trinity

Schafer Creek

Rock Creek

Chiwawa River Road

Chiwawa Loop Rd

BEAVER VALLEY RD

To Leavenworth



Lake Wenatchee Ranger Station

Lake Wenatchee
1800'

GLACIER VIEW

State Park

GROCERIES GAS

Nason Creek

PLAIN GROCERIES GAS

To Seattle

To Leavenworth

Big Hill

Shady Pass

Handy Spring

Junior Point

Grouse Mtn

Stromy Mtn.
7198'

Windy Camp

Pine Flat
2000'

Devils Backbone

POT PEAK
4708'

Snowberry

Angle Peak
6740'

Stormy Mtn.
7198'

Windy Camp

Devils Backbone

Potato Creek

Mud Creek

To Entiat