

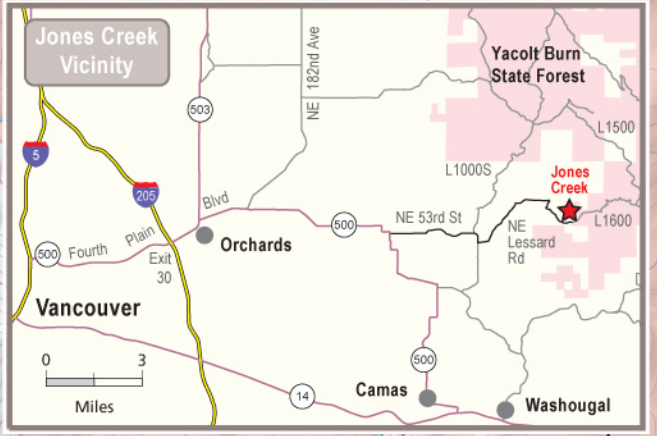
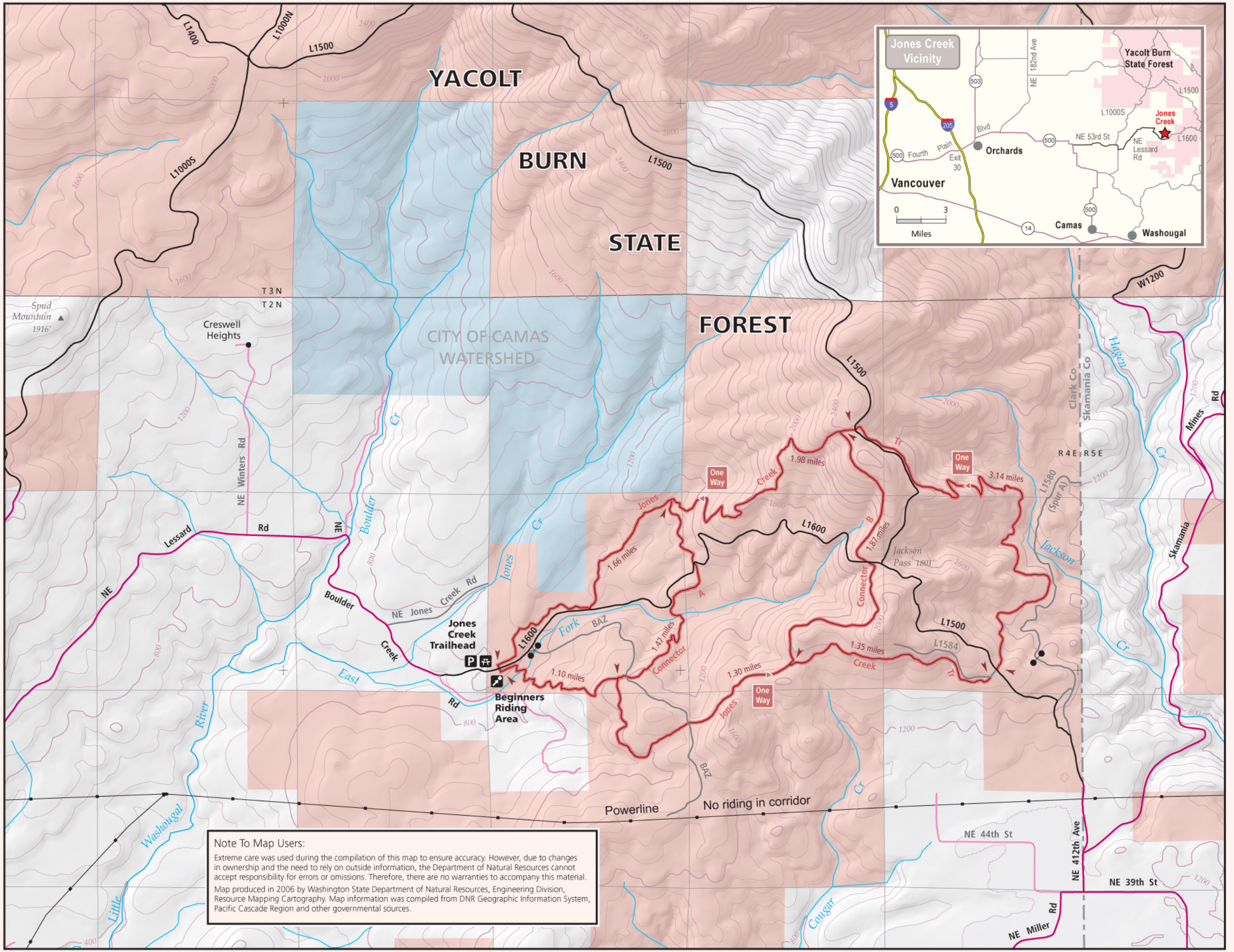
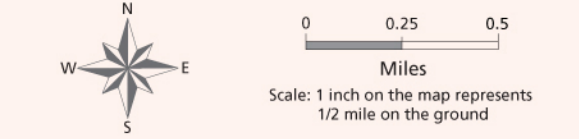
2009 Jones Creek Trail System and Vicinity

- Public Land**
- Dept of Natural Resources Trust Land
 - Municipal Watershed
- Road and Trail System**
- Primary County Road
 - Secondary County Road
 - Primary Forest Road
 - Secondary Forest Road
 - ATV - 2 Track Trail
 - Mileage
 - Gate (Some gates closed seasonally)

Note: Jones Creek trails run one-way. Follow directional signs.

- Contour Interval = 80 Feet.
- Recreation Sites**
- Trailhead (loading facilities)
 - Picnic Site
 - Point of Interest

- On DNR Land**
- Fires are only allowed in designated fire pits.
 - Pack out garbage and litter.
 - Do not alter or remove vegetation.
 - Do not ride in streams, muddy areas, wetlands, or on road embankments.
- On DNR Roads**
- Only licensed drivers, street-legal, or valid ORV tagged vehicles are allowed.
 - Riders under the age of 13 years old must be under direct supervision of a person who has a valid drivers license and is at least 18 years of age.
 - Helmet required for quads and motorcycles.
 - Speed limit is 25 miles per hour.
 - Be ready to yield right of way to heavy equipment and logging trucks.
- On DNR Trails**
- Ride from dawn to dusk only.
 - Stay on signed, DNR-managed trails.
 - Unsigned trails are closed.
 - Respect the rights of others.
 - Watch for unmarked hazards on trails; report hazards.
- At the Trailhead**
- Use the trailhead area only for entering and exiting the trail system.
 - Ramps are for loading and unloading only.
 - Follow posted rules at Beginner's Riding Area.
 - No camping or fires.
 - No shooting and/or paintballing in DNR designated recreation sites.
 - No garbage service is provided. Pack out garbage and litter.
 - Speed limit is 5 miles per hour.
- To report hazards, or for questions call the DNR Pacific Cascades Region office at 360-577-2025.



Note To Map Users:
Extreme care was used during the compilation of this map to ensure accuracy. However, due to changes in ownership and the need to rely on outside information, the Department of Natural Resources cannot accept responsibility for errors or omissions. Therefore, there are no warranties to accompany this material. Map produced in 2006 by Washington State Department of Natural Resources, Engineering Division, Resource Mapping Cartography. Map information was compiled from DNR Geographic Information System, Pacific Cascade Region and other governmental sources.