

# High Lakes and Blue Lake Trail System

This map is provided to facilitate your recreation activities on the Gifford Pinchot National Forest. The trails identified on this map are primarily motorized trails, for use by motorcycles. The easy to use system of "green to go" identifies our motorized trail opportunities. Please respect the non-motorized sections of the trail (red segments). OHV use is prohibited on all Gifford Pinchot National Forest roads as well as off trail.

ATV's (quads) are welcome on the Blue Lake Trail system - Trails #270 (from Blue Lake Creek Campground to FR 78), #271, and #271A, providing a loop experience. This loop system is identified as More Difficult.

## MOTORCYCLE REQUIREMENTS

**STREET LEGAL MOTORCYCLES** are allowed on all Forest roads and designated Forest trails that are open to motorized use.

### Street legal requirements:

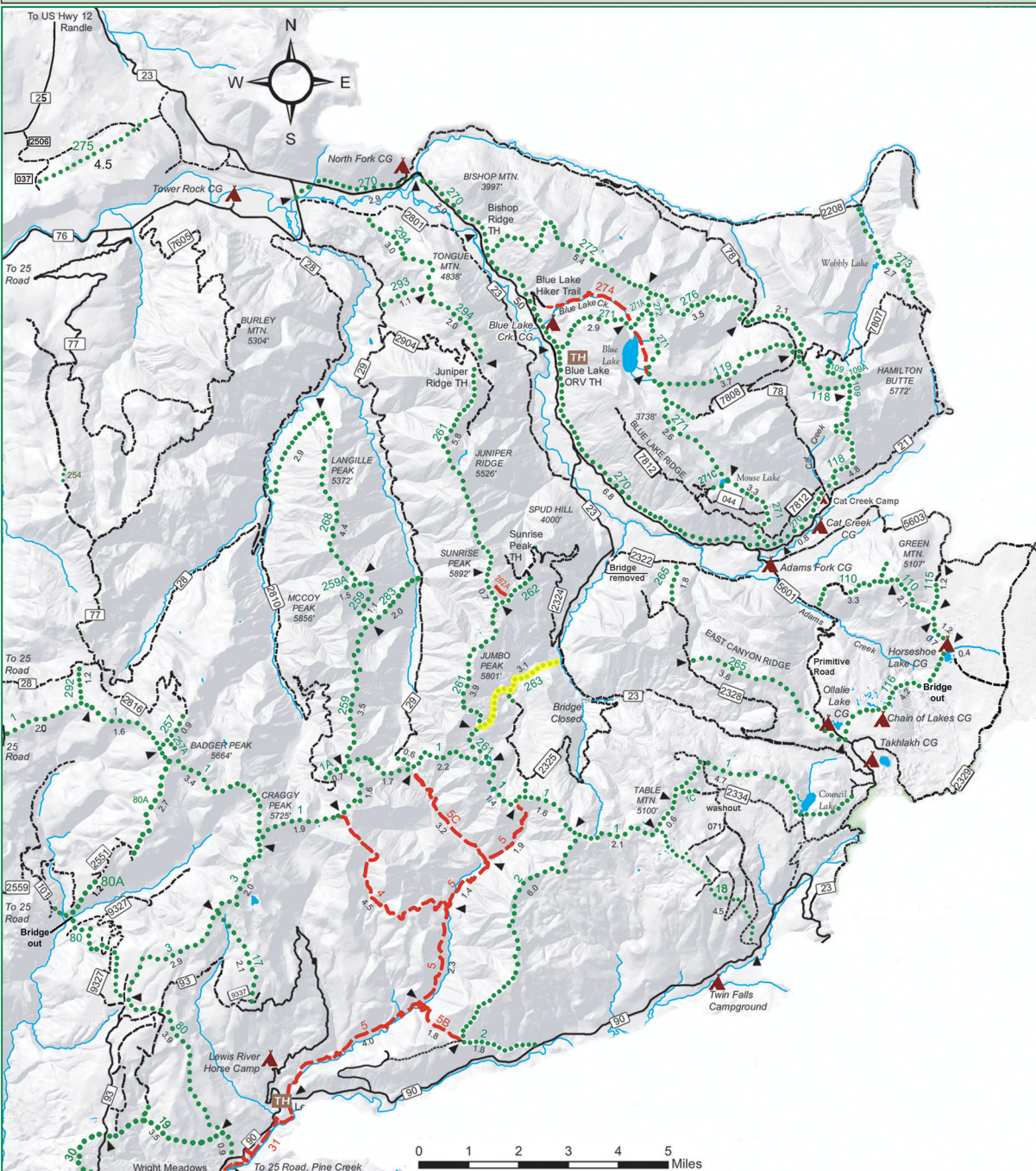
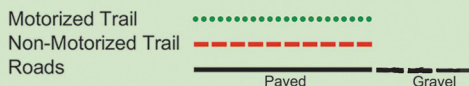
- operational headlight, taillight, and brake lights
- two mirrors
- horn
- muffler with spark arrester, USDA Forest Service approved
- D.O.T. approved tires
- valid State license plate
- motorcycle endorsement
- D.O.T. approved helmet

**TRAIL LEGAL MOTORCYCLES**

are allowed on designated Forest trails that are open to motorized use.

### Trail legal requirements:

- operational headlight, taillight, at night or during poor visibility
- spark arrester, USDA Forest Service approved
- muffler that limits exhaust noise to 105 decibels
- current ORV permit tabs, permits are good for one year



This map is intended for general reference and is approximate in general proportions.